

RESEARCH ARTICLE

Open Access



Unemployment rate, opioids misuse and other substance abuse: quasi-experimental evidence from treatment admissions data

Sunday Azagba^{1*} , Lingpeng Shan¹, Fares Qeadan¹ and Mark Wolfson²

Abstract

Background: The relationship between economic conditions and substance abuse is unclear, with few studies reporting drug-specific substance abuse. The present study examined the association between economic conditions and drug-specific substance abuse admissions.

Methods: State annual administrative data were drawn from the 1993–2016 Treatment Episode Data Set. The outcome variable was state-level aggregate number of treatment admissions for six categories of primary substance abuse (alcohol, marijuana/hashish, opiates, cocaine, stimulants, and other drugs). Additionally, we used a broader outcome for the number of treatment admissions, including primary, secondary, and tertiary diagnoses. We used a quasi-experimental approach -difference-in-difference model- to estimate the association between changes in economic conditions and substance abuse treatment admissions, adjusting for state characteristics. In addition, we performed two additional analyses to investigate (1) whether economic conditions have an asymmetric effect on the number of substance use admissions during economic downturns and upturns, and (2) the moderation effects of economic recessions (2001, 2008–09) on the relationship between economic conditions and substance use treatment.

Results: The baseline model showed that unemployment rate was significantly associated with substance abuse treatment admissions. A unit increase in state unemployment rate was associated with a 9% increase in treatment admissions for opiates ($\beta = 0.087, p < .001$). Similar results were found for other substance abuse treatment admissions (cocaine ($\beta = 0.081, p < .001$), alcohol ($\beta = 0.050, p < .001$), marijuana ($\beta = 0.036, p < .01$), and other drugs ($\beta = 0.095, p < .001$). Unemployment rate was negatively associated with treatment admissions for stimulants ($\beta = -0.081, p < .001$). The relationship between unemployment rate and opioids treatment admissions was not statistically significant in models that adjusted for state fixed effects and allowed for a state- unique time trend. We found that the association between state unemployment rates and annual substance abuse admissions has the same direction during economic downturns and upturns. During the economic recession, the negative association between unemployment rate and treatment admissions for stimulants was weakened.

Conclusion: These findings suggest that economic hardship may have increased substance abuse. Treatment for substance use of certain drugs and alcohol should remain a priority even during economic downturns.

Keywords: Substance abuse treatment, Treatment admissions, Opioids, Economic conditions; unemployment rate

* Correspondence: sazagba@utah.edu

¹Department of Family and Preventive Medicine, University of Utah School of Medicine, Salt Lake City, UT 84108, USA

Full list of author information is available at the end of the article



© The Author(s). 2020 **Open Access** This article is licensed under a Creative Commons Attribution 4.0 International License, which permits use, sharing, adaptation, distribution and reproduction in any medium or format, as long as you give appropriate credit to the original author(s) and the source, provide a link to the Creative Commons licence, and indicate if changes were made. The images or other third party material in this article are included in the article's Creative Commons licence, unless indicated otherwise in a credit line to the material. If material is not included in the article's Creative Commons licence and your intended use is not permitted by statutory regulation or exceeds the permitted use, you will need to obtain permission directly from the copyright holder. To view a copy of this licence, visit <http://creativecommons.org/licenses/by/4.0/>. The Creative Commons Public Domain Dedication waiver (<http://creativecommons.org/publicdomain/zero/1.0/>) applies to the data made available in this article, unless otherwise stated in a credit line to the data.

Background

Substance abuse, the harmful or hazardous use of psychoactive substances, remains a significant public health problem. In 2017, approximately 74,000 persons died of drug-related causes, and about 36,000 died of alcohol-related causes (excluding accidents, homicides, and prenatal exposure) [1]. The United States has experienced an increase in the prevalence of illicit drug use, from 8.3% in 2002 to 11.2% in 2017 [2, 3]. There has also been a recent rise in the use of marijuana from 14.5 million (5.8%) in 2007 to almost 41 million (15%) in 2017 [2, 3]. In contrast, alcohol dependence decreased from 18.1 million (7.7%) in 2002 to 17.3 million (6.6%) in 2013 [2]. In 2017, almost 17 million persons (6.1%) reported heavy alcohol use in the past month, and nearly 67 million (24.5%) reported binge alcohol use, a slight increase from 2016 [2].

The relationship between economic conditions and substance abuse is ambiguous. Several studies have found that tighter budgets during economic crises impacted drinking behaviors, including less alcohol consumption, with people switching to cheaper products and drinking at home rather than drinking at bars [4–7]. However, prior studies have documented that economic downturns, along with their related stresses such as job loss, are associated with increased problematic drinking [8, 9]. There is also evidence that unemployment is strongly associated with problematic substances use, including the use of alcohol, marijuana, and illicit drugs [10]. An international study from Australia found that economic downturns were significantly associated with the frequency of marijuana use among young adults, and a procyclical relationship was found for the frequency of drinking [5]. Furthermore, multiple studies have found that sales and use of marijuana and other illicit drugs increased among young adults and teenagers as the unemployment rate decreased [11, 12]. A study conducted among African American adults in Milwaukee's inner city found that those employed full-time tested positive for cocaine less often than those who were unemployed, and those employed part-time had higher rates of testing positive than those employed full-time [13].

Substance abuse treatment admissions can be used as an indicator of excessive or problematic substance use. However, due to a lack of available quality drug abuse and treatment data, existing research has been limited to investigating general substance use treatment admissions (not drug-specific) or restricted to certain subpopulations. In addition, few studies have examined the association between national economic conditions and substance use [5, 11, 12, 14].

A recent study in the U.S. based on self-reported data found that economic downturns led to increases in the intensity of prescription pain reliever use as well as

opioid substance use disorders, especially among working-age white males with low education [15]. The present study expands on prior work, examining the relationship between economic conditions and substance use, using admissions data from the 1993 to 2016 Treatment Episode Data Sets (TEDS) and a more diverse set of illicit drug categories (i.e., alcohol, marijuana, opioids, stimulants, cocaine) [16].

Methods

Data

TEDS is a national admission-based data system administered by the Center for Behavioral Health Statistics and Quality of the Substance Abuse and Mental Health Services Administration (SAMHSA). Since 1992, the TEDS system has compiled data from each state to track annual discharges and admissions to public and private substance abuse facilities that receive public funding. Treatment facilities that receive public funds or are licensed or certified by state substance abuse agencies are required to report data on all clients, regardless of health insurance status. The TEDS system comprises two major components: the Admissions Data Set and the Linked Discharge Data Set. Both data sets provide demographic, clinical, substance service characteristics and settings, employment status, presence of psychiatric problems, prior history, route of administration, insurance status, and source of payment for all patients 12 years of age and older. In addition, three (primary, secondary, and tertiary) substances of abuse, their route of administration, frequency of use, age at first use, and a source of referral to treatment are recorded for each admission. TEDS classifies substance use into seven categories: alcohol, marijuana/hashish, opiates (heroin, non-prescription methadone, and other opiates and synthetics), cocaine, stimulants (methamphetamine, other amphetamines, and other stimulants), other drugs, and none reported. We used the TEDS admissions data set from 1993 to 2016, excluding the "none reported" category.

Measurement

Dependent variables

State identifiers in TEDS were used to derive the state-level aggregate number of treatment admissions for six categories of primary substance use (alcohol, marijuana/hashish, opiates, cocaine, stimulants and other drugs) for each year individually. Additionally, we used a broader outcome for the state-level aggregated number of treatment admissions, including primary, secondary, and tertiary diagnosis for any each category of substance use.

Independent variables

Our main dependent variable was economic condition. We used state unemployment rates to represent the

economic condition. State unemployment rates and median household income (in thousand dollars) for each state were obtained from the Bureau of Labor Statistics [17–19]. We also obtained state laws on medical marijuana laws from ProCon.org [20], state alcohol taxes from the tax policy center [21], and the insurance coverage rate for each state from the U.S. Census Bureau [22]. We followed the Census Bureau's recommendations for obtaining insurance coverage rates and used the Health Insurance Historical Tables - Original Series for 1993 through 1998, the Current Population Survey Annual Social and Economic Supplement (CPS ASEC) data to estimate 1999 through 2007, and the American Community Survey (ACS) for rates after 2007. These two estimates differ slightly but parallel in change between 2009 and 2012. Additional state-level characteristics including the log of population, mean age, percentage of the state population that is male, and percentage of the population that is white were calculated using U.S. Population Data through the National Cancer Institute (NCI) [23]. The inflation-adjusted beer excise tax was measured in each state at the 2018 price level.

We created a dichotomous indicator, economic trend, to test whether economic conditions had an asymmetric effect on substance use treatment admissions in economic upturns and downturns. When unemployment was higher than in the previous period, the economy experienced a downward trend. Otherwise, the economy was under expansion. We additionally created a recession indicator. The two periods, 2001 and 2008–2009, were considered recessions with negative economic growth, in accordance with the National Bureau of Economic Research, Inc assessment [24].

Statistical analysis

We used difference-in-difference (DID) models to estimate whether changes in economic conditions were associated with changes in substance use treatment admission. Generally, DID is a quasi-experimental design used to estimate the effect of a specific policy or intervention (state unemployment rate in our study) by comparing the changes in outcomes over time between the treatment group and control group [25]. The outcome variable, the state-level aggregate number of treatment admissions, was log-transformed in order to address potential skewness. Multivariable linear regressions models were used to assess the association between the economic condition (state unemployment rate) and substance use treatment admissions. Model 1 adjusted all listed state-level characteristics, including log of population, mean age, percentage of state population that is male, percentage of state population that is white, state insurance coverage rate, state median household income (in thousands), medical marijuana laws, and survey year.

Model 1 additionally adjusted for census division fixed effects to capture unobserved confounders that cluster among neighboring states at the division level. State beer taxes were adjusted for alcohol substance use treatment only (see eq. (1)).

$$Y_{st} \sim \beta_1 * Econ_s + \beta_2 * Year_t + \beta_3 * Division_s + \sum \beta_j X_{st} + \epsilon_{st} \quad (1)$$

Model 2 adjusted for state fixed effects to control unobserved confounding influences that are time-invariant and state-specific. We used variance inflation factors (VIF) to check for multicollinearity in covariance between the included state-level characteristics and state fixed effects. We elected not to include the log of population and percentage of the state population that is white in Model 2 (VIF > 10) (see eq. (2)).

$$Y_{st} \sim \beta_1 * Econ_s + \beta_2 * Year_t + \beta_3 * State_s + \sum \beta_j X_{st} + \epsilon_{st} \quad (2)$$

Model 3 added interaction between state and year to Model 2, in order to allow for a state-unique time trend and control for unobserved state-level factors that evolve at a constant smooth function (see eq. (3)). Models 1–3 were repeated for the broader substance use treatment variable.

$$Y_{st} \sim \beta_1 * Econ_s + \beta_2 * Year_t + \beta_3 * State_s + \beta_4 * State_s * Year_t + \sum \beta_j X_{st} + \epsilon_{st} \quad (3)$$

To investigate whether economic conditions have an asymmetric effect on the number of substance use treatment admissions during economic upturns and downturns, following the work by Mocan and Bali [26], Model 4 modified Model 3 by defining the number of substance use admissions as an asymmetric function of two decomposed unemployment rates during economic downturns (state unemployment rate in periods when it is higher than the prior period) and economic upturns (state unemployment rate in periods when it is lower than the prior period) (see eq. (4)).

$$Y_{st} \sim \beta_1 * Econ_{down} + \beta_2 * Econ_{up} + \beta_3 * Year_t + \beta_4 * State_s + \beta_5 * State_s * Year_t + \sum \beta_j X_{st} + \epsilon_{st} \quad (4)$$

$Econ_{down}$ and $Econ_{up}$ were constructed using state unemployment rates. $Econ_{down}$ equals unemployment rate in periods when it is higher than the prior period, and $Econ_{up}$ equals 0 during economic downturns. $Econ_{up}$ equals unemployment rate when it is lower than the prior period, and $Econ_{down}$ equals 0 during economic upturns. The X_{st} is a vector of other covariates included in the model.

$$\begin{aligned}
 Y_{st} \sim & \beta_1 * R_{st} + \beta_2 * UR_{st} + \beta_3 * R_{st} * UR_{st} \\
 & + \beta_3 * Year_t + \beta_4 * State_s \\
 & + \beta_5 * State_s * Year_t + \sum \beta_j X_{st} + \epsilon_{st} \quad (5)
 \end{aligned}$$

To test the moderation effects of economic recessions (2001, 2008–09) on the relationship between economic conditions and substance use treatment, Model 5 modified Model 3 by adding the economic recession indicator (R) and an interaction term between the state unemployment rate (UR) and economic recession indicator (R) (see eq. (5)). All tests were two-sided and used a 5% significance level. All of the analyses were performed using SAS 9.4 (SAS Institute, Inc., Cary, NC) and R 3.5 (R Foundation for Statistical Computing, Vienna, Austria).

Results

Economic condition

Figure 1 presents substance use treatment admissions from 1993 to 2016. The median number of state substance use treatment admissions for opiates and stimulants increased while the admissions for alcohol and cocaine decreased during the study period (Fig. 1).

Table 1 presents the association between the state unemployment rate and annual admissions to substance abuse treatment facilities. Unemployment was

significantly associated with substance abuse treatment. In Model 1, a unit increase in unemployment rate was associated with a 9% [(exp (0.087)-1)*100%] increase in opioid treatment admissions ($\hat{\beta} = 0.087, p < .001$). Similar associations were found in treatment admissions for cocaine ($\hat{\beta} = 0.081, p < .001$), alcohol ($\hat{\beta} = 0.050, p < .001$), marijuana ($\hat{\beta} = 0.036, p < .01$), and other drugs ($\hat{\beta} = 0.095, p < .001$). However, states with higher unemployment rates had a lower number of treatment admissions for stimulants ($\hat{\beta} = -0.081, p < .001$). In Model 2, which adjusted for state fixed effects instead of division effects as in the first model, a similar association was found between state unemployment rate and substance use treatment admissions, except the association was not significant for opiates admissions ($\hat{\beta} = 0.002, p = 0.84$). Similarly, in Model 3, after adjusting for state-year interaction in addition to Model 2 covariates, unemployment rate was positively associated with alcohol admissions ($\hat{\beta} = 0.026, p < .001$) and admissions for other drugs ($\hat{\beta} = 0.049, p < .001$), but negatively associated with stimulants admissions ($\hat{\beta} = -0.067, p < .001$). State median household income and population were significantly

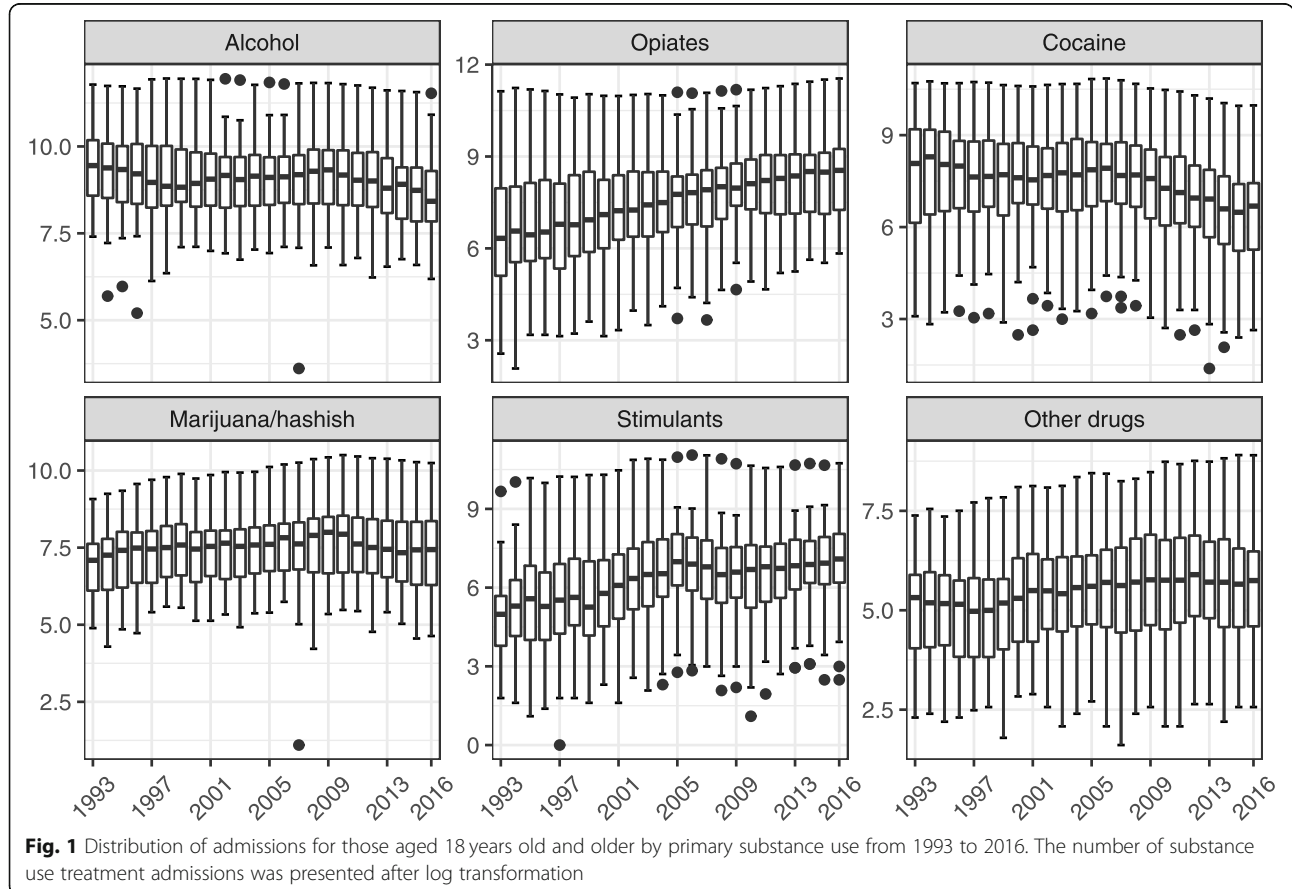


Table 1 Association between unemployment rate and substance abuse treatment admissions, 1993–2016

Primary diagnosis	Model 1			Model 2			Model 3		
	$\hat{\beta}$	SE($\hat{\beta}$)	p-value	$\hat{\beta}$	SE($\hat{\beta}$)	p-value	$\hat{\beta}$	SE($\hat{\beta}$)	p-value
Opiates	0.087	0.012	<.001	0.002	0.010	0.84	0.005	0.008	0.54
Cocaine	0.081	0.014	<.001	0.033	0.011	<.01	−0.004	0.009	0.64
Alcohol	0.050	0.011	<.001	0.039	0.007	<.001	0.026	0.007	<.001
Marijuana/hashish	0.036	0.012	<.01	0.024	0.009	<.01	0.006	0.009	0.49
Stimulants	−0.081	0.016	<.001	−0.057	0.012	<.001	−0.067	0.010	<.001
Other drugs	0.095	0.013	<.001	0.068	0.011	<.001	0.049	0.010	<.001
Any diagnosis									
Opiates	0.080	0.014	<.001	0.009	0.010	0.34	0.010	0.008	0.22
Cocaine	0.063	0.012	<.001	0.030	0.009	<.001	−0.002	0.008	0.80
Alcohol	0.041	0.011	<.001	0.029	0.007	<.001	0.017	0.007	0.01
Marijuana/hashish	0.029	0.011	<.01	0.025	0.008	<.01	0.010	0.007	0.16
Stimulants	−0.066	0.014	<.001	−0.033	0.010	<.01	−0.040	0.009	<.001
Other drugs	0.098	0.014	<.001	0.065	0.011	<.001	0.050	0.010	<.001

$p < 0.05$ is presented in bold. Primary diagnosis represents primary substances cited for alcohol or drug treatment. Any diagnosis represents that the substance was one of the primary, secondary, or tertiary substances cited for alcohol or drug treatment

Model 1 adjusted all listed state-level characteristics, including log of population, mean age, percentage of state population that is male, percentage of state population that is white, state insurance coverage rate, state median household income (in thousands), medical marijuana laws, census division fixed effects and survey year. State beer taxes were adjusted for alcohol substance use treatment

Model 2 adjusted for state fixed effects to control unobserved confounding influences that are time-invariant and state-specific in addition to Model 1 state-level characteristics

Model 3 added interaction between state and year to Model 2, in order to allow for a state-unique time trend and control for unobserved state-level factors that evolve at a constant smooth function

associated with all substance abuse treatment admissions. Similar results were found for the association between unemployment rate and broader estimated annual admissions.

Unemployment symmetric effects and economic recession

Table 2 shows the results of the association between state unemployment rates and annual admissions to substance abuse treatment facilities in economic downward and upward trends (Model 4). Compared to the original Model 3 results, unemployment rates remain negatively associated with annual admissions for stimulant treatment during economic downturns ($\hat{\beta} = -0.070$, $p < .001$) and economic upturns ($\hat{\beta} = -0.092$, $p < .001$). Likewise, unemployment rates were positively associated with annual alcohol and other drug treatment admissions during economic downturns and upturns. The state unemployment rates were negatively associated with annual cocaine treatment admissions during economic downturns and economic upturns ($\hat{\beta} = -0.037$, $p < .001$), but the association was not significant during economic downturns ($\hat{\beta} = -0.009$, $p = 0.35$). We found that the association between state unemployment rates and annual substance abuse admissions has the same direction during economic downturns and upturns. Therefore,

unemployment rate appears to have a symmetric effect given that $Econ_{up}$ and $Econ_{down}$ coefficients were not statistically significantly different (except for marijuana/hashish, stimulants, cocaine).

Table 3 shows the moderation analysis of how the economic recession affected the relationship between state unemployment rates and substance abuse admissions (Model 5). The unemployment rate was at a peak during the two recession periods (2001, 2008–09) (Fig. 2). Although there was a negative association between the unemployment rate and substance use admissions for stimulants ($\hat{\beta} = -0.067$, $p < .01$) in the baseline analysis (Model 1), the interaction term showed that the negative association was weakened during the economic recession. The moderation effect was not significant for other substances.

Discussion

The present study found that the unemployment rate was significantly associated with substance abuse treatment admissions for alcohol, marijuana, opiates, cocaine, and other drugs. These results are in line with a prior study that found that as county unemployment rates increased, the opioid death rate and opioid overdose emergency department visit rate both increased [27]. Additionally, prior studies reported increases in alcohol-related disorders and problematic drinking during the

Table 2 Association between state unemployment rate and annual admissions to substance abuse treatment facilities in economic downward and upward trends

Mode 4		Baseline model: state unemployment rate	State unemployment rate in periods when it is higher than the prior period	State unemployment rate in periods when it is lower than the prior period
Opiates	$\hat{\beta}$	0.005	0.004	-0.001
	SE($\hat{\beta}$)	0.008	0.008	0.010
	p-value	0.54	0.61	0.90
Cocaine	$\hat{\beta}$	-0.004	-0.009	-0.037
	SE($\hat{\beta}$)	0.009	0.009	0.011
	p-value	0.64	0.35	<.001
Alcohol	$\hat{\beta}$	0.026	0.025	0.020
	SE($\hat{\beta}$)	0.007	0.007	0.008
	p-value	<.001	<.001	0.01
Marijuana/hashish	$\hat{\beta}$	0.006	0.005	-0.004
	SE($\hat{\beta}$)	0.009	0.009	0.010
	p-value	0.49	0.59	0.68
Stimulants	$\hat{\beta}$	-0.067	-0.070	-0.092
	SE($\hat{\beta}$)	0.010	0.010	0.012
	p-value	<.001	<.001	<.001
Other drugs	$\hat{\beta}$	0.049	0.049	0.048
	SE($\hat{\beta}$)	0.010	0.010	0.012
	p-value	<.001	<.001	<.001

$p < 0.05$ is presented in bold

recession, particularly among households experiencing unemployment [9, 28]. A recent Spanish study also found an increase in marijuana and cocaine use during the great recession [29]. Our results showed a negative association between unemployment rates and substance abuse admissions for stimulants; however, the relationship was altered during economic recessions. In prior research, being unemployed or working part-time was associated with increased use of stimulants [30]. A possible explanation for this discrepancy is the perception of stimulants compared to other drugs. For example, one study found that college students often perceive the misuse of stimulants as safe [31], and thus may not feel the need to seek treatment, especially during times of economic hardship.

Our findings lend support to the idea that the self-medication model may be applicable to examining substance use among those experiencing economic hardship. The self-medication model of drinking suggests that alcohol is used to cope with psychological distress. Economic hardship has been associated with depression, anxiety, and psychological distress [28, 32, 33]. Based on our results, this theory may also extend to illicit drug use. As a result of economic hardship, some may develop problems with alcohol and drugs due to self-

medication, resulting in the increased rates of treatment admissions we found in our study. Particularly, unemployment may increase psychological distress, resulting in increasing use of and treatment admissions for marijuana, opiates, cocaine, and other drugs.

We found that the relationship between unemployment rate and annual substance abuse admissions was mostly similar (symmetric effect) for economic downturns and upturns (with the exception of marijuana/hashish, cocaine, and stimulants). These findings suggest that, at least for some substances, the unemployment rate is consistently associated with treatment admissions regardless of the current economic climate. Our findings that substance use treatment admission is associated with unemployment indicate that during economic downturns, people may rely on substances to cope. During economic crises and times of high unemployment rates, there may be a need for more substance use treatment facilities as problematic substance use increases. This study's findings suggest the need to prioritize funding for substance use treatment facilities during and after economic crises.

The present study has some limitations worth noting. We used substance treatment facility admissions as an indicator of excessive or problematic substance abuse, which only captures a portion of substance abuse

Table 3 Association between unemployment rate and substance abuse treatment admissions in economic recessions

Model 5		Unemployment rate	Economic recession	Unemployment rate* Economic recession
Opiates	$\hat{\beta}$	-0.008	0.058	0.010
	SE($\hat{\beta}$)	0.010	0.103	0.010
	p-value	0.43	0.57	0.67
Cocaine	$\hat{\beta}$	-0.039	0.049	0.029
	SE($\hat{\beta}$)	0.049	0.112	0.016
	p-value	< 0.01	0.66	0.07
Alcohol	$\hat{\beta}$	0.010	0.015	0.014
	SE($\hat{\beta}$)	0.008	0.082	0.012
	p-value	0.20	0.86	0.24
Marijuana/hashish	$\hat{\beta}$	-0.012	-0.006	0.019
	SE($\hat{\beta}$)	0.010	0.104	0.015
	p-value	0.22	0.96	0.20
Stimulants	$\hat{\beta}$	-0.085	-0.214	0.043
	SE($\hat{\beta}$)	0.012	0.127	0.018
	p-value	< 0.01	0.09	0.02
Other drugs	$\hat{\beta}$	0.041	0.178	-0.01
	SE($\hat{\beta}$)	0.012	0.125	0.020
	p-value	< 0.01	0.16	0.50

p < 0.05 is presented in bold

problems and may have resulted in selection bias. In addition, because of the precautions taken to ensure anonymity, some of those admitted to treatment facilities could have been double-counted if they returned for a second round of treatment. Due to the nature of the current

study, caution is needed when applying grouped results to the individual level (ecological fallacy). Despite its limitations, the current study expands the existing literature work by using objective measures of problematic substance use and more diverse illicit drug categories.

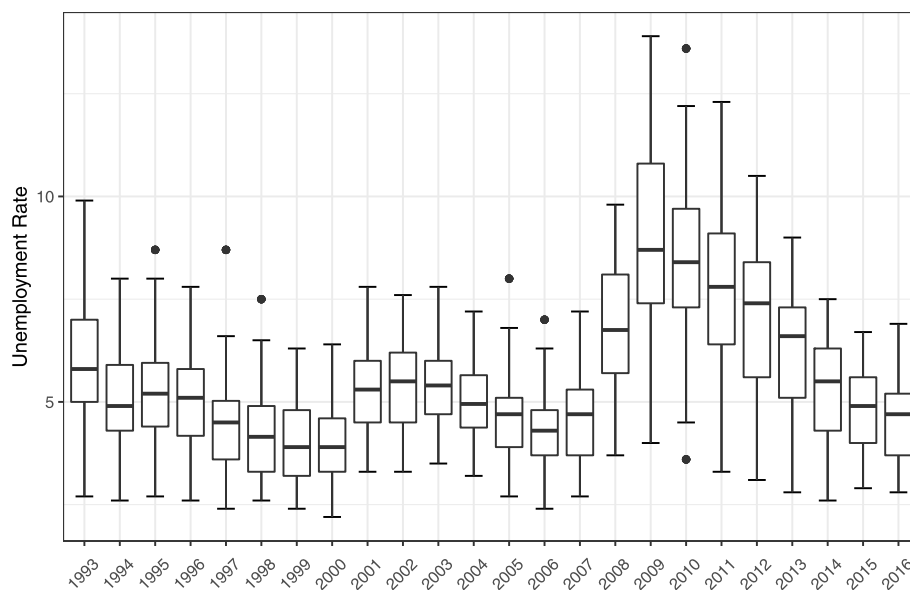


Fig. 2 Trend of average state unemployment rate, 1993–2016

Conclusions

We found that unemployment was associated with substance abuse admissions for alcohol, marijuana, opiates, cocaine, and other drug use. These findings suggest that economic hardship is associated with increased substance use and also implies that treatment for substance use of certain drugs and alcohol should remain a priority even during economic downturns. Treatment for stimulant use may be the exception, as we found that state unemployment rates were negatively associated with treatment admissions for stimulants. However, the relationship between the unemployment rate and stimulant treatment admissions may be moderated by economic recession.

Abbreviations

TEDS: Treatment Episode Data Sets; SAMHSA: Substance Abuse and Mental Health Services Administration; ACS: American Community Survey; CPS ASEC: Current Population Survey Annual Social and Economic Supplement; NCI: National Cancer Institute; DID: Difference-in-difference

Acknowledgments

Lauren Manzione provided editorial assistance.

Authors' contributions

S.A. conceptualized, designed the study, and supervised the writing and analyses. L.S. conducted the data analysis. F. Q and M. W critically reviewed the manuscript. All authors approved the final manuscript as submitted.

Funding

None.

Availability of data and materials

Data is publicly available on <https://www.icpsr.umich.edu/icpsrweb/ICPSR/series/56>

Ethics approval and consent to participate

Not applicable.

Consent for publication

Not applicable.

Competing interests

The authors declare that they have no competing interests.

Author details

¹Department of Family and Preventive Medicine, University of Utah School of Medicine, Salt Lake City, UT 84108, USA. ²Department of Social Medicine, Population and Public Health, University of California Riverside School of Medicine, Riverside, CA 92501, USA.

Received: 4 February 2020 Accepted: 22 November 2020

Published online: 10 January 2021

References

- Kochanek KD, Murphy SL, Xu J, Arias E. Deaths: Final Data for 2017; National Vital Statistics Reports; 2019.
- Substance Abuse and Mental Health Services Administration Results from the 2017 national survey on drug use and health: detailed tables; 2018.
- National Institute on Drug Abuse Nationwide Trends Available online: <https://www.drugabuse.gov/publications/drugfacts/nationwide-trends> (accessed on Oct 1, 2019).
- Cotti C, Dunn RA, Tefft N. The great recession and consumer demand for alcohol: a dynamic panel-data analysis of US households. *Am J Health Econ.* 2015;1:297–325.
- Chalmers J, Ritter A. The business cycle and drug use in Australia: evidence from repeated cross-sections of individual level data. *Int J Drug Policy.* 2011; 22:341–52.
- Perlman FJA. Drinking in transition: trends in alcohol consumption in Russia 1994–2004. *BMC Public Health.* 2010;10:691.
- Munné MI. Alcohol and the economic crisis in Argentina: recent findings. *Addiction.* 2005;100:1790–9.
- de Goeij MCM, Bruggink J-W, Otten F, Kunst AE. Harmful drinking after job loss: a stronger association during the post-2008 economic crisis? *Int J Public Health.* 2017;62:563–72.
- Gili M, Roca M, Basu S, McKee M, Stuckler D. The mental health risks of economic crisis in Spain: evidence from primary care centres, 2006 and 2010. *Eur J Pub Health.* 2013;23:103–8.
- Compton WM, Gfroerer J, Conway KP, Finger MS. Unemployment and substance outcomes in the United States 2002–2010. *Drug Alcohol Depend.* 2014;142:350–3.
- Arkes J. Does the economy affect teenage substance use? *Health Econ.* 2007;16(1):19–36. <https://doi.org/10.1002/hec.1132>.
- Arkes J. Recessions and the participation of youth in the selling and use of illicit drugs. *Int J Drug Policy.* 2011;22:335–40.
- Weston BW, Krishnaswami S, Gray MT, Coly G, Kotchen JM, Grim CE, Kotchen TA. Cocaine use in inner city african american research volunteers. *J Addict Med.* 2009;3:83–8.
- Colell E, Sánchez-Niubò A, Delclos GL, Benavides FG, Domingo-Salvany A. Economic crisis and changes in drug use in the Spanish economically active population. *Addiction.* 2015;110:1129–37.
- Carpenter CS, McClellan CB, Rees DI. Economic conditions, illicit drug use, and substance use disorders in the United States. *J Health Econ.* 2017;52: 63–73.
- Substance Abuse and Mental Health Services Administration Treatment Episode Data Set: Admissions Available online: <https://www.datafiles.samhsa.gov/study-series/treatment-episode-data-set-admissions-teds-nid13518> (accessed on Sep 30, 2019).
- U.S. Bureau of Labor Statistics Consumer Price Index (CPI) Databases Available online: <https://www.bls.gov/cpi/data.htm> (accessed on Oct 1, 2019).
- US Census Bureau Historical Income Tables: Households Available online: <https://www.census.gov/data/tables/time-series/demo/income-poverty/historical-income-households.html> (accessed on Oct 1, 2019).
- US Bureau of Labor Statistics Local Area Unemployment Statistics Available online: <https://www.bls.gov/LAU/> (accessed on Oct 1, 2019).
- ProCon 33 Legal Medical Marijuana States and DC - Medical Marijuana - ProCon.org Available online: https://medicalmarijuana.procon.org/view_resource.php?resourceID=000881 (accessed on Oct 1, 2019).
- Tax Policy Center State Alcohol Excise Taxes Available online: <https://www.taxpolicycenter.org/statistics/state-alcohol-excise-taxes> (accessed on Oct 1, 2019).
- US Census Bureau Health Insurance Historical Tables - HIC Series Available online: <https://www.census.gov/data/tables/time-series/demo/health-insurance/historical-series/hic.html> (accessed on Oct 1, 2019).
- National Cancer Institute Download U.S. Population Data - 1969–2017 Available online: <https://seer.cancer.gov/popdata/download.html> (accessed on Oct 1, 2019).
- The National Bureau of Economic Research US Business Cycle Expansions and Contractions Available online: <http://www.nber.org/cycles/> (accessed on Oct 1, 2019).
- Angrist, J.D.; Pischke, J.-S. *Mostly harmless econometrics: an empiricist's companion*; Princeton university press, 2008; ISBN 1-4008-2982-8.
- Mocan HN, Bali TG. Asymmetric Crime Cycles. *Rev Econ Stat.* 2010;92: 899–911.
- Hollingsworth A, Ruhm CJ, Simon K. Macroeconomic conditions and opioid abuse. *J Health Econ.* 2017;56:222–33.
- Brown E, Wehby GL. Economic conditions and drug and opioid overdose deaths. *Med Care Res Rev.* 2019;76:462–77.
- Bassols NM, Castello JV. Effects of the great recession on drugs consumption in Spain. *Econ Hum Biol.* 2016;22:103–16.
- Perlmutter AS, Conner SC, Savone M, Kim JH, Segura LE, Martins SS. Is employment status in adults over 25 years old associated with nonmedical prescription opioid and stimulant use? *Soc Psychiatry Psychiatr Epidemiol.* 2017;52:291–8.

31. Weyandt LL, Janusis G, Wilson KG, Verdi G, Paquin G, Lopes J, Varejao M, Dussault C. Nonmedical Prescription Stimulant Use Among a Sample of College Students: Relationship With Psychological Variables; 2009.
32. Williams DT, Cheadle JE. Economic hardship, parents' depression, and relationship distress among couples with young children. *Soc Ment Health*. 2016;6:73–89.
33. Mirowsky J, Ross CE. Age and the effect of economic hardship on depression. *J Health Soc Behav*. 2001;42:132–50.

Publisher's Note

Springer Nature remains neutral with regard to jurisdictional claims in published maps and institutional affiliations.

Ready to submit your research? Choose BMC and benefit from:

- fast, convenient online submission
- thorough peer review by experienced researchers in your field
- rapid publication on acceptance
- support for research data, including large and complex data types
- gold Open Access which fosters wider collaboration and increased citations
- maximum visibility for your research: over 100M website views per year

At BMC, research is always in progress.

Learn more biomedcentral.com/submissions

