

RESEARCH ARTICLE

Open Access



Efficacy of prospective pharmacogenetic testing in the treatment of major depressive disorder: results of a randomized, double-blind clinical trial

Víctor Pérez^{1,2}, Ariana Salavert³, Jordi Espadaler³, Miquel Tuson³, Jerónimo Saiz-Ruiz^{1,4}, Cristina Sáez-Navarro^{1,5}, Julio Bobes^{1,6}, Enrique Baca-García^{1,7,8,9}, Eduard Vieta^{1,10}, José M. Olivares¹¹, Roberto Rodríguez-Jiménez^{1,12}, José M. Villagrán¹³, Josep Gascón¹⁴, Josep Cañete-Crespillo¹⁵, Montse Solé^{1,5}, Pilar A. Saiz^{1,6}, Ángela Ibáñez^{1,4}, Javier de Diego-Adeliño^{1,16}, AB-GEN Collaborative Group and José M. Menchón^{1,17,18*}

Abstract

Background: A 12-week, double-blind, parallel, multi-center randomized controlled trial in 316 adult patients with major depressive disorder (MDD) was conducted to evaluate the effectiveness of pharmacogenetic (PGx) testing for drug therapy guidance.

Methods: Patients with a CGI-S ≥ 4 and requiring antidepressant medication de novo or changes in their medication regime were recruited at 18 Spanish public hospitals, genotyped with a commercial PGx panel (Neuropharmagen[®]), and randomized to PGx-guided treatment ($n = 155$) or treatment as usual (TAU, control group, $n = 161$), using a computer-generated random list that locked or unlocked psychiatrist access to the results of the PGx panel depending on group allocation. The primary endpoint was the proportion of patients achieving a sustained response (Patient Global Impression of Improvement, PGI-I ≤ 2) within the 12-week follow-up. Patients and interviewers collecting the PGI-I ratings were blinded to group allocation. Between-group differences were evaluated using χ^2 -test or t-test, as per data type.

Results: Two hundred eighty patients were available for analysis at the end of the 12-week follow-up (PGx $n = 136$, TAU $n = 144$). A difference in sustained response within the study period (primary outcome) was not observed (38.5% vs 34.4%, $p = 0.4735$; OR = 1.19 [95%CI 0.74-1.92]), but the PGx-guided treatment group had a higher responder rate compared to TAU at 12 weeks (47.8% vs 36.1%, $p = 0.0476$; OR = 1.62 [95%CI 1.00-2.61]), and this difference increased after removing subjects in the PGx-guided group when clinicians explicitly reported not to follow the test recommendations (51.3% vs 36.1%, $p = 0.0135$; OR = 1.86 [95%CI 1.13-3.05]). Effects were more consistent in patients with 1–3 failed drug trials. In subjects reporting side effects burden at baseline, odds of achieving a better tolerability (Frequency, Intensity and Burden of Side Effects Rating *Burden* subscore ≤ 2) were higher in the PGx-guided group than in controls at 6 weeks and maintained at 12 weeks (68.5% vs 51.4%, $p = 0.0260$; OR = 2.06 [95%CI 1.09-3.89]).

(Continued on next page)

* Correspondence: jmenchon@bellvitgehospital.cat

¹Centro de Investigación Biomédica en Red de Salud Mental (CIBERSAM), Av. Monforte de Lemos, 3-5, Madrid, Spain

¹⁷Department of Psychiatry, Hospital Universitari de Bellvitge, Institut d'Investigació Biomèdica de Bellvitge (IDIBELL), Carretera de la Feixa Llarga s/n, 08907 Hospitalet de Llobregat, Barcelona, Spain

Full list of author information is available at the end of the article



(Continued from previous page)

Conclusions: PGx-guided treatment resulted in significant improvement of MDD patient's response at 12 weeks, dependent on the number of previously failed medication trials, but not on sustained response during the study period. Burden of side effects was also significantly reduced.

Trial registration: European Clinical Trials Database 2013-002228-18, registration date September 16, 2013; ClinicalTrials.gov NCT02529462, retrospectively registered: August 19, 2015.

Keywords: Depression, Pharmacogenetics, Precision medicine, Antidepressant response, Randomized clinical trial

Background

Major depressive disorder (MDD) is a leading cause of disability worldwide [1]. Actions to reduce the impact of depression on patients, families and healthcare systems are thus a public health priority. Despite the growing number of pharmacological treatments at our disposal, response and remission rates for antidepressants are not optimal [2] and psychiatry faces the challenge to improve utilization of current therapeutic tools. Besides failure with first- or second-line therapy, disability and economic costs associated with long-term depression are also linked to high rates of drug-induced adverse effects [3].

Common genetic variation has been estimated to explain up to 42% of variance in antidepressant response [4]; however, genome-wide association studies had been mostly unsuccessful in identifying individual risk variants and there are only a few examples on the use of pharmacogenetic information to guide treatment selection [5, 6]. The role of individual gene variants in the metabolism and response to psychotropic medications has been studied by several independent research groups and current evidence supports the contribution of certain genes to drug metabolism, safety or efficacy. Among them, the most replicated findings include cytochrome P450 genes (mainly *CYP2D6* and *CYP2C19*) and serotonin genes (*SLC6A4*, *HTR2C*, *HTR2A*) as well as the *ABCBI* transporter gene [7–10]. Recently, the Clinical Pharmacogenetics Implementation Consortium (CPIC) has published guidelines for drug selection and/or dosing of tricyclic antidepressants [11] and selective serotonin reuptake inhibitors [12] based on genotypes for *CYP2D6* and *CYP2C19*. Moreover, pharmacogenomics information has been incorporated into drug labels both in the US and EU [13, 14]. Pharmacogenetics-driven precision medicine based on prediction of therapeutic efficacy, tolerability and side-effects could help reduce the time spent until the 'right drug at the right dose' is attained [15]. However, for an adequate clinical implementation of pharmacogenetic testing in psychiatry, information from different genes influencing pharmacokinetic and pharmacodynamic aspects of drug response must be integrated, as well as practical tools are needed to facilitate the interpretation of the genotyping results and their translation into clinical practice [16]. Additionally,

prospective randomized clinical trials (RCT) conducted in populations of adequate size are necessary to assess the clinical utility of pharmacogenetic testing in psychiatry. A recent systematic review reported that a limited number of studies have shown promise for the clinical utility of pharmacogenetic testing [17]. However, it was noted that the majority of studies were not randomized or blinded, indeed only two small single-center RCT [18, 19] have been conducted with a proper randomized double-blinded design. This review also pointed out that published studies did not assess at what point in the treatment of MDD pharmacogenetic testing should be utilized.

Neuropharmagen® (NFG®) is a pharmacogenomics-based precision medicine platform, developed by AB-Biotics SA (Barcelona, Spain), for managing psychiatric patients and to assist clinicians in drug selection and/or dosing choices. Previously, efficacy of pharmacogenetic testing with this test in the selection of psychiatric medication was retrospectively evaluated in 182 patients with various psychiatric diagnoses (depression, anxiety, schizophrenia and bipolar disorder, among others). This study showed that subjects whose treatment was prescribed following the test recommendations had 3.86-fold greater odds of improvement than patients whose treatment did not follow the test recommendations [20]. Also, stabilization rate at 3-month follow-up was significantly higher in individuals whose treatment followed the pharmacogenetic test results.

Here we present the results of a prospective, multicenter, randomized, double-blind clinical trial analyzing the clinical utility of pharmacogenetic testing with the Neuropharmagen platform. The aim of the study was to analyze the efficacy of pharmacogenetic information in the selection of drug treatments for MDD patients conducted under real-world clinical practice conditions. Clinical utility of the test is analyzed in terms of improvement in depression symptoms and in drug tolerability. Additionally, we examined the effect of the number of previous failed antidepressant trials on the utility of pharmacogenetic treatment guidance.

Methods

The aim of this prospective, multicenter, randomized, double-blind, parallel controlled trial was to evaluate the

effectiveness of pharmacogenetic (PGx) testing for drug therapy selection in major depressive disorder patients by comparing clinical outcomes in patients randomized to PGx-guided treatment or treatment as usual (control group). This randomized controlled trial adheres to the CONSORT guidelines [21].

Study sample

Five hundred and twenty patients (both outpatients and inpatients) were enrolled from 18 hospitals and associated mental health centers in Spain from July 29, 2014 to June 15, 2015 (Additional file 1: Figure S1) and provided a saliva sample for DNA analysis. Eligible subjects were 18 years of age and over, with a principal diagnosis of major depressive disorder according to the Diagnostic and Statistical Manual of Mental Disorders (DSM-IV-TR) criteria. Inclusion criteria were: i) subjects with a clinician-rated score in the Clinical Global Impression-Severity (CGI-S) scale ≥ 4 both at screening and randomization visit [22]; ii) subjects who, according to the doctors' assessment, required medication de novo or were receiving treatment and required substitution or addition of drug treatment with an antidepressant drug. To obtain a representative sample, individuals with secondary comorbid psychiatric and other medical illness could be included. Only primary psychiatric diagnoses other than MDD, pregnant and breastfeeding women, as well as patients requiring treatment with quinidine, cinacalcet and/or terbinafine (known CYP2D6 strong inhibitors) were excluded.

Data collection

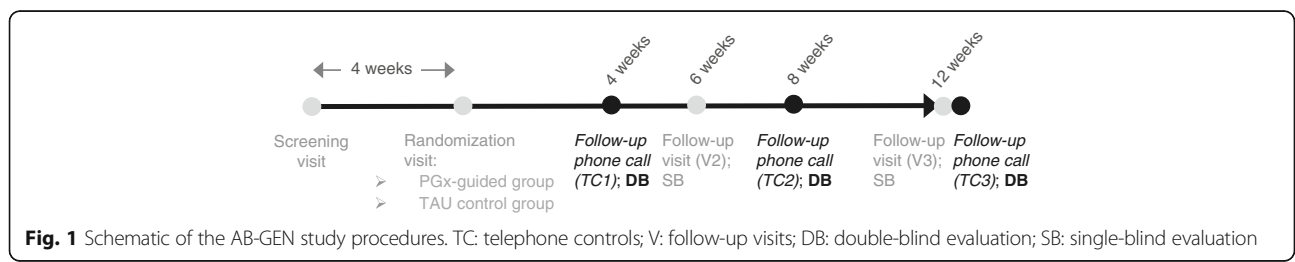
Sociodemographic data, clinical diagnosis, duration of the depressive episode and current and past treatment for MDD as well as CGI-S scale (both clinician- and patient-rated) were recorded at the screening visit. Baseline (randomization visit) and follow-up visits at 6 and 12 weeks were conducted by study investigators on a single-blinded manner (Fig. 1), whereas blinded interviewers conducted telephone interviews at 4, 8 and 12 weeks to collect the Patient Global Impression of Improvement (PGI-I) scale (primary study variable [22] on a double-blinded manner. During the visits in person, drug treatments for MDD, changes and reasons for the changes and/or discontinuation were recorded. Clinical

assessment performed by the treating psychiatrists (i.e. single-blinded) included the following scales: 17-item Hamilton Depression Rating Scale (HDRS-17) [23], Frequency, Intensity, and Burden of Side Effects Ratings (FIBSER) [24], clinician-rated and patient-rated CGI-S scale, Sheehan Disability Inventory (SDI) [25, 26], and Treatment Satisfaction with Medicines Questionnaire (SATMED-Q) [27].

Genotyping and reporting of test results

At the screening visit, all study subjects provided a saliva sample for DNA extraction and genotyping of the genetic polymorphisms. DNA was extracted from patient saliva samples with the Genomic DNA Isolation Kit (Norgen Biotek Corp., Thorold, ON, Canada) following the manufacturer's instructions. Genotyping of single nucleotide polymorphisms was performed by OpenArray® Technology on the QuantStudio™ 12 K Flex Real-Time PCR System (Thermo Fisher Scientific Inc., Waltham, MA USA) using a custom designed array (see Additional file 1: Table S1 for the list of polymorphisms analyzed). CYP2D6 copy number analysis was performed in an Applied Biosystems® 7500 Real-Time PCR System using Hs04083572_cn and Hs04502391_cn TaqMan copy number assays targeting CYP2D6 intron 2 and intron 6, respectively, and RNase P copy number assay as a reference (Thermo Fisher Scientific Inc., Waltham, MA USA).

The Neuropharmagen pharmacogenetic report (AB-Biotics SA, Barcelona, Spain) was accessible through a web-based computer-aided system (Additional file 1: Figure S2), provided information for 50 drugs (antidepressants, antipsychotics, mood stabilizers and other CNS drugs) and integrated three elements: (a) pharmacogenomic data derived from the analysis of genetic polymorphisms in 30 genes associated with drug efficacy, metabolism or specific adverse effects (Additional file 1: Table S1); (b) information on pharmacological interactions, involving psychotropic drugs as well as concomitant medications; and (c) data on specific clinical conditions and lifestyle influences. For each drug, the pharmacogenomics interpretative report (Additional file 1: Figure S3) highlights gene-drug interactions and provides drug-specific treatment recommendations as per FDA-approved drug labeling [13], published pharmacogenetic



guidelines [11, 12, 28] and selected clinical studies [29–35]. For example, in a patient carrying the *CYP2D6**4/*4 diplotype (predicted as a poor metabolizer phenotype), the antidepressant amitriptyline will be highlighted in yellow and the following recommendation will be associated to the drug: “Consider an alternative drug not metabolized by this pathway. If this drug is warranted, consider a 50% reduction of the recommended starting dose. Use therapeutic drug monitoring to guide dose adjustments”. Moreover, using a comprehensive built-in database of drug-drug, drug-clinical condition and drug-lifestyle factor interactions based on FDA-approved drug labeling, the web platform displays the most relevant alerts. The reporting algorithm prioritizes alerts using a color-coding system indicating with a red label alerts associated with adverse effects, with a yellow label alerts associated with drug metabolism variations, and with a green label alerts associated with increased likelihood of positive response. Whenever two or more alerts of different category are present for a particular drug, the summary table of the report highlights the most important alert whereas the detailed drug information section displays all the identified.

Randomization, concealment and study groups

Subjects fulfilling all inclusion criteria and none of the exclusion criteria were included in the study and randomized to either the PGx-guided group or the control group (treatment as usual, TAU). Randomization was stratified by centre with a 1:1 ratio for intervention and control group, using a computer-generated random list. Patient blinding was ensured through a computer-assisted system: for each patient randomized to the PGx-guided group, the system provided the treating psychiatrists a numerical code to unlock their online access to the individual patient’s pharmacogenetics test report. At their discretion, treating psychiatrists could also check drug-drug, drug-clinical condition and drug-lifestyle factor interaction alerts in the reports online platform for patients in the PGx-guided group. For patients in the control group, clinicians did not have access to their reports until the end of the study and subjects were treated as usual without pharmacogenetic information. Patients in both study groups were treated by the same psychiatrists, who could choose whichever drug, drug combination and dosing schedule suited the best to each patient. For patients in the PGx-guided group, treating psychiatrists were asked to indicate whether, in their own judgment, the medication they prescribed was in accordance to the results provided by the test or not. As the treating psychiatrists were not blinded regarding patient allocation, assessment of the primary variable (PGI-I) was conducted by independent telephone interviewers who were blinded regarding patient allocation, thus ensuring a double-blind evaluation.

Statistical analysis

The primary outcome of the study was the efficacy of the pharmacogenetic information in the selection of drug treatments for MDD considering the proportion of patients achieving a sustained response through a 12-week follow up period. A response was considered when the patient had a PGI-I score of 2 or less at a given phone interview (i.e. reported their condition was “Much better” or “Very much better”). A sustained response was achieved when a patient was classified as a responder on at least two consecutive evaluations, and maintained that status until the final visit of the study. The PGI-I scale was selected as the primary study variable as it allowed double-blinded evaluation of patient-rated improvement through phone interviews, and could be easily incorporated into interviews at 4, 8 and 12 weeks. Sample size was calculated to detect a significant difference with a sustained response around 30% in the control group and of 45% in the study group with $\alpha = 0.05$ and power = 80%, resulting in a target N of 390 (195 per group) when assuming a 20% loss to follow-up. Adding an expected loss of 25% of patients between screening visit and randomization visit due to improvement of their condition or not requiring medication changes resulted in the total target N of 520. A per protocol population was defined by excluding subjects randomized to the PGx-guided group when their treating psychiatrists explicitly reported to have prescribed a treatment regime not in accordance to the test results. Secondary variables were response at the end of the 12-week follow-up (based on a PGI-I score of 2 or less), clinical progression (based on HDRS-17 score), severity of the disorder (based on the CGI-S score), tolerability of treatment (based on the FIBSER score), patient satisfaction with treatment (according to the SATMED-Q score), and patient disability (based on the SDI score). Regarding treatment tolerability, the cutoff for the acceptability of side effects was established at a FIBSER *Burden* subscore equal lower than 2, following the built-in recommendations in the FIBSER questionnaire. A descriptive statistics analysis for all variables was performed. χ^2 tests or Student’s *t*-tests were used to compare pairwise differences between groups and between baseline and follow-up visits as per data type, while Pearson’s *r* was used to measure correlation between variables. Shapiro-Wilk test was used to verify normality of data. All reported *p*-values are raw *p*-values. Because 4 outcomes comparing the PGx-guided group to the control one were calculated on the primary variable (sustained response and response on week 12, full population and per-protocol population), a *p*-value threshold corrected for multiple comparisons was calculated. A key assumption of multiplicity correction methods such as Bonferroni or Sidak is the independence of the

assessed outcomes. Thus, because of the existing correlation among the outcomes calculated on the primary variable, a correlation-corrected method was used [36], resulting in an adjusted p -value threshold of 0.0271 when considering the lowest correlation observed between these 4 variables (i.e. the more conservative correction). The effect of time on response rate within each study group was assessed using the Cochran-Armitage modification of the χ^2 tests (to account for the order of visits). Effect sizes on the HDRS-17 scale as a function of the number of previously failed antidepressant therapies for the current episode were calculated using Hedge's formula for Cohen's d [37]. Post-hoc sub-analyses were performed in subjects having failed 1 to 3 previous medications. Statistical analyses were performed using SAS version 9.3 software (SAS Institute Inc., Cary, NC, USA).

Results

Sociodemographic and clinical information at baseline is shown in Table 1 and patient flow through the study is summarized in Additional file 1: Figure S4. Of the 520 patients with a diagnosis of MDD enrolled in the study, 316 fulfilled inclusion criteria and were randomized (intent-to-treat population). Evaluated subjects had a mean age of 51.2 years (± 12.6), 63.6% were women and 92.4% Caucasian, and had a mean duration of MDD since diagnosis of the current depressive episode

of 60.2 months (± 94.4), and a median of 14.1 months. At randomization, the mean HDRS-17 score was 19.2 (± 5.8). The main psychiatric comorbidities were anxiety disorder (35.8%) and substance abuse disorders (12.6%), and most patients were not drug-naïve (84.2%), with an average of 2.6 (± 2.2) previous antidepressant medication trials for the current episode, varying from 0 to 15. Similar scores were recorded at baseline in both the study and control groups in all questionnaires, except for the *Intensity* and *Burden* of side effects items of the FIBSER scale, which were significantly higher in the study group (Additional file 1: Table S2). The proportion of subjects not attending visits in the study and control groups was 7.1% vs 11.2%, respectively, while the proportion of subjects not answering telephone interviews for the primary variable was 12.3% vs 10.6%, respectively. Thus, there were no statistically significant differences in patient drop-outs (subjects not attending visits) nor in loss to follow-up for the primary variable (subjects not answering the telephone interviews).

Clinical efficacy on depression outcomes

The PGI-I score was evaluated in a double-blinded manner at 4, 8 and 12 weeks. Differences in sustained response starting at 4 or 8 weeks could not be observed in this study (Fig. 2a). The number of responders at the end of the study (i.e. indicating their condition was "Much better" or "Very much better" on week 12) was

Table 1 Demographic and clinical characteristics of the study population

		Study group	Control group	p -value
Subjects		155	161	
Age (years), mean (SD)		51.74 (12.05)	50.74 (13.12)	0.4801
Gender, n (%)	Female	99 (63.9)	102 (63.4)	0.9239
	Male	56 (36.1)	59 (36.6)	
Ethnicity (%)	Caucasian	145 (93.5)	147 (91.3)	0.6215
	Latin American	7 (4.5)	10 (6.2)	
	Other	3 (2.0)	4 (2.5)	
Time since diagnosis (months), mean (SD)		58.89 (93.29)	61.52 (95.80)	0.8050
Main diagnosis, n (%)	Major depression	146 (94.2)	148 (91.9)	0.7035
	Dysthymic disorder	5 (3.2)	8 (5.0)	
	Other non-specified depressive disorder	4 (2.6)	5 (3.1)	
Clinical Global Impression-Severity (CGI-S) scale, clinician-rated, mean (SD)		4.50 (0.62)	4.40 (0.57)	0.1663
Hamilton Depression Rating Scale (HDRS-17), mean (SD)		19.47 (5.96)	19.01 (5.71)	0.4818
Patient Global Impression of Improvement scale (PGI-I), single-blinded inclusion criterion, n (%)	No change	108 (69.7)	123 (76.4)	0.4026
	A little worse	26 (16.8)	20 (12.4)	
	Much worse	16 (10.3)	16 (9.9)	
	Very much worse	5 (3.2)	2 (1.2)	
Previous failed psychiatric medication trials, mean (SD)		2.55 (2.35)	2.57 (2.10)	0.9175

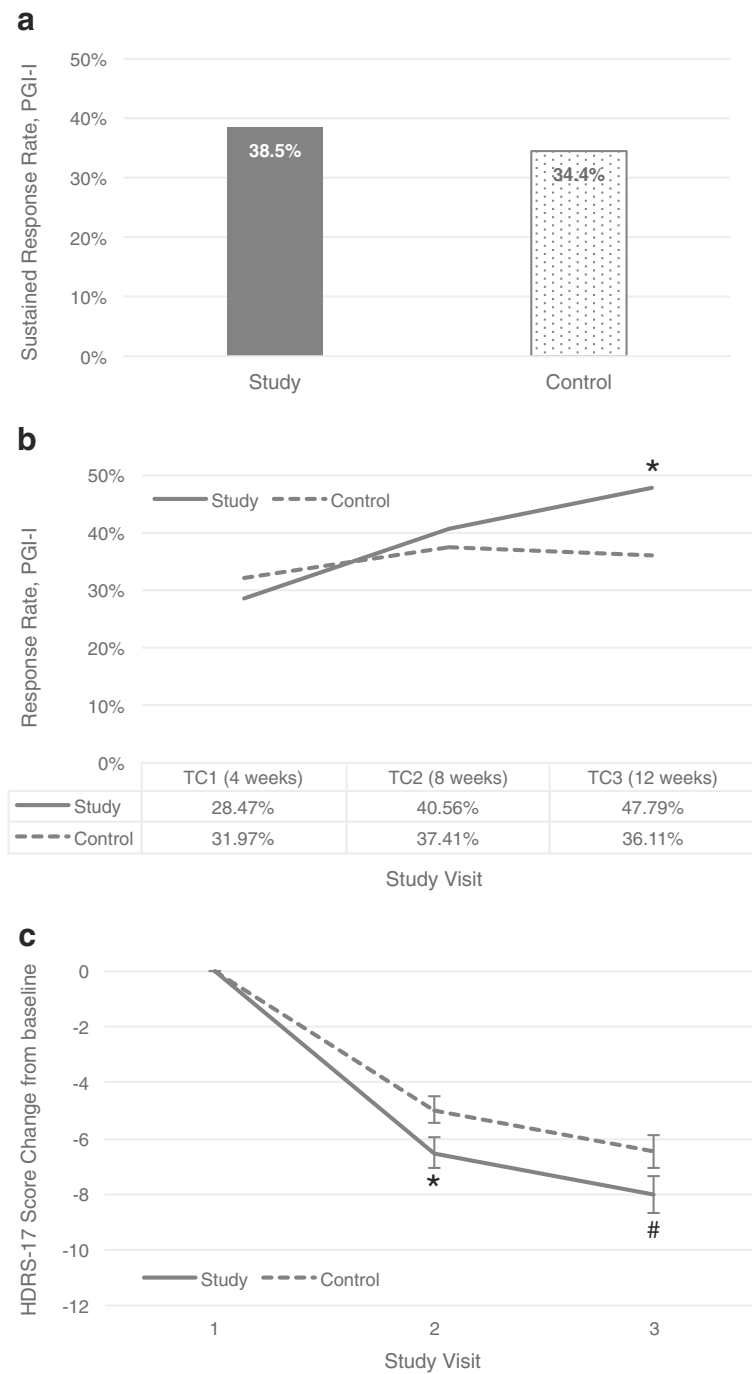


Fig. 2 a Sustained response rate (PGI-I score ≤ 2 on two consecutive evaluations by phone interview). **b** Response rate based on subjects reporting a PGI-I score ≤ 2 and **c** change in HDRS-17 score in the total ITT population. TC: telephone controls; # $p < 0.1$; * $p < 0.05$

nominally higher in the PGx-guided group than in the control group (47.8 vs 36.1%, $p = 0.0476$, OR = 1.62 [95%CI 1.00-2.61]). Moreover, in a within group analysis, the response rate in the PGx-guided group increased progressively in the three phone interviews from week 4 to week 12 ($p = 0.0009$), while the increase within the control group was not statistically significant (Fig. 2b).

In 17 of the subjects of the PGx-guided group, the treating psychiatrists reported to have prescribed medications in disagreement with the test results during the study period. Thus, the per-protocol analysis excluded these subjects from the PGx-guided group. Again, a significant difference in sustained response was not observed in this analysis, but the difference in the response

rate at 12 weeks between the PGx-guided group and controls increased (51.3% vs 36.1%, $p = 0.0135$, OR = 1.86 [95%CI 1.13-3.05]). When correcting for multiplicity of analysis for the 4 comparisons of PGI-I between the PGx-guided and the control group (sustained response and response at 12 weeks, full population and per-protocol population), this p -value of 0.0135 is below the correlation-adjusted threshold calculated of 0.0271 (see Methods). Besides, response rate at 12 weeks among the 17 subjects excluded in the per-protocol analysis was very low (23.5%, $p = 0.0323$, compared to the remaining subjects of the PGx-guided group).

In the secondary analyses, improvement in depression rating scores was also statistically significant for the 17-item Hamilton Depression Rating Scale (HDRS-17) at 6 weeks ($p = 0.0364$) and a trend at 12 weeks ($p = 0.0771$) (Fig. 2c). Patients in the PGx-guided group presented a higher reduction in HDRS-17 (approximately a point and a half difference) than TAU control patients, that corresponded to Cohen's d values of 0.25 and 0.21 at 6 and 12 weeks, respectively. Moreover, significant results favoring the PGx-guided treatment group were found in clinician-rated CGI-S, all three FIBSER indices and SATMED-Q total and partial scores, as well as the SDI Perceived Social Support partial score, but not in patients-rated CGI-S (Additional file 1: Table S3). Response and remission rates calculated post-hoc on the HDRS-17 (single-blinded) are reported in Additional file 1: Table S4, and baseline severity, as determined by HDRS-17, was found to impact the difference in response rate between PGx-guided and control groups. No significant differences were found in the distribution of antidepressants types prescribed in the PGx-guided and the control groups (Additional file 1: Table S5). Of note, PGI-I rating on week 12 was significantly correlated to change from baseline in both the clinician-rated CGI-S and HDRS-17 ($r = -0.46$ and $r = -0.30$, respectively, $p < 0.0001$ in both cases), indicating that the lower the PGI-I score (i.e. more improvement), the larger the reduction in CGI-S and HDRS scores. Also, PGI-I rating on week 12 was significantly correlated to sustained response ($r = 0.56$, $p < 0.0001$).

Because the PGx web platform also provides a tool to assess the impact of drug-drug, drug-clinical condition and drug-lifestyle factor interactions, the PGx sample was further split in two groups depending on whether the treating physicians had consulted the interactions tool. Responder rate was slightly higher in the group where interaction alerts had been consulted, compared to use of PGx alone (50.0% vs 45.8%), but the difference was not significant. Conversely, an opposite trend was observed in HDRS-17 score, as the reduction was slightly larger in the group using PGx information alone, both on week 6 and 12, but again the difference was not statistically significant.

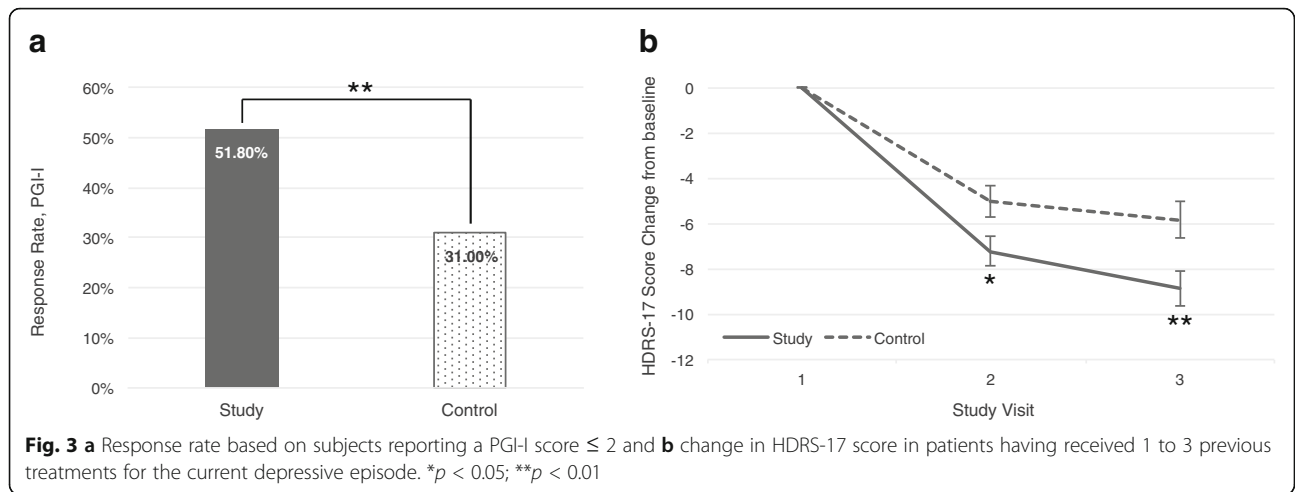
Due to the large heterogeneity observed in the number of previous antidepressant medication trials for the current depressive episode, a sub-analysis was performed to evaluate the effect of this variable on the benefit of pharmacogenetic testing, by means of calculation of Cohen's d . Study subjects with 1, 2 or 3 previous failed treatments for the current episode had a small clinical benefit compared to actively treated controls as seen by Cohen's d calculated from the change in HDRS-17, whereas drug naïve subjects and those having received 4 or more medication trials did not (Additional file 1: Table S6). Among subjects having received 1 to 3 previous psychiatric treatments ($n = 173$), statistically significant differences were identified at 12 weeks in the percentage of patients with a positive response to treatment based on the PGI-I score (51.8% vs 31%, $p = 0.0058$, OR = 2.39 [95%CI 1.28-4.44]), and on the HDRS-17 score both at 6 weeks ($p = 0.0237$) and 12 weeks ($p = 0.0083$) (Fig. 3a and b). At 12 weeks, the mean and median reductions in HDRS-17 were 3 points larger in the study group than in the control group (Additional file 1: Table S7), resulting in a Cohen's d value of 0.41.

Medication tolerability

To assess the impact of pharmacogenetic testing on medication tolerability, subjects with a FIBSER *Burden* subscore of ≥ 1 at baseline were analyzed ($n = 177$). At baseline, this tolerability subpopulation did not display significant differences among groups in the FIBSER *Burden* domain score (Additional file 1: Table S8). Notably, the likelihood of reaching a FIBSER *Burden* score ≤ 2 (i.e. no general need to address side effects) was significantly higher in the PGx-guided treatment group after 6 weeks (66.7% vs 50.0%, $p = 0.0294$, OR = 2.00 [95%CI: 1.07 – 3.75]), and was maintained at 12 weeks (68.5% vs. 51.4%, $p = 0.0260$, OR = 2.06 [95%CI: 1.09 – 3.89]) (Fig. 4). To assess the independence between changes in depression symptoms and side effect burden, Pearson correlation was measured between the change in the FIBSER *Burden* subscore at 6 and 12 weeks and the change in HDRS-17 score on the same visits. Although the effect was statistically significant in both visits ($p = 0.003$ and $p = 0.023$), the effect sizes were very small ($r = 0.18$ and $r = 0.14$, respectively), suggesting that the improvement in medication tolerability made a significant but small effect on the improvement in the HDRS-17 scale.

Discussion

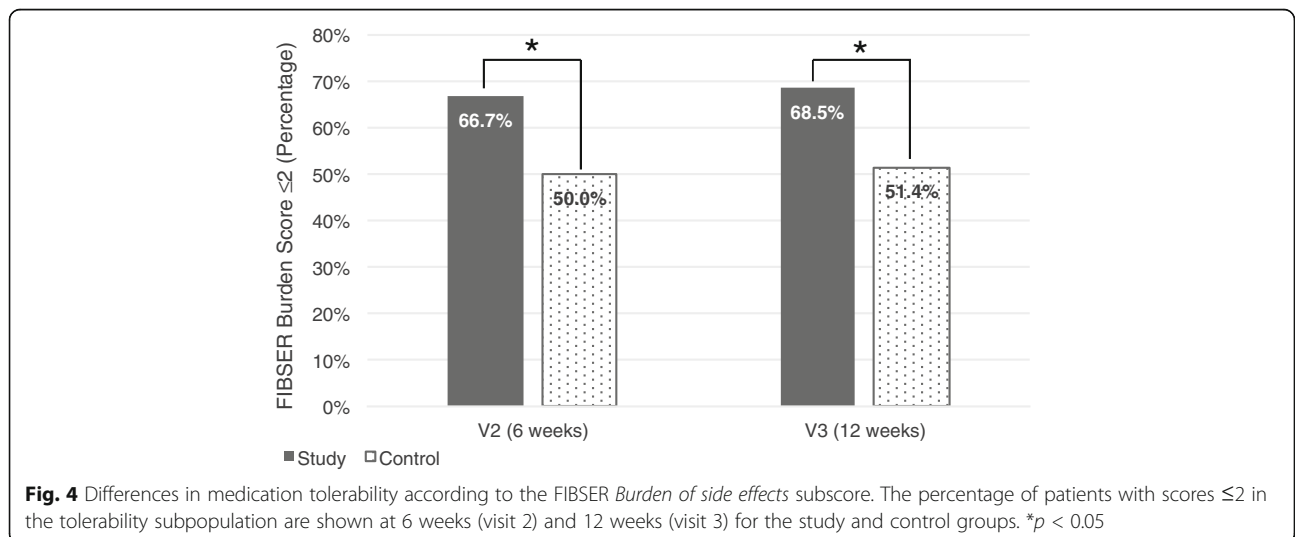
To our knowledge this is the first large-scale multicenter, prospective, double-blind randomized clinical trial (RCT) to assess whether PGx-guided selection of treatment is more effective than unguided treatment in improving MDD patients' response and poor drug tolerability. Our



results show that achievement of sustained response within the 12-week follow-up period (primary outcome of the study) did not differ between the two groups. Positive results were found within 12 weeks of treatment based on the double-blind evaluation of patient-rated improvement (PGI-I), especially when the 17 subjects randomized to the PGx-guided group but being prescribed a drug regime not in accordance with the test results were excluded. Positive results were also observed within the first 6 weeks of treatment according to HDRS-17 change (single-blind).

Proper randomization and blinding are necessary because performing a genetic test has the potential to affect the attitude of the patient towards the post-test medication, resulting in increased adherence, as has been recently shown for other medical conditions [38]. In our study, we ensured double-blinding by using the patient rating of improvement (PGI-I scale), collected by blinded phone interviews, as the primary variable. The treating psychiatrists, which selected the drug regiment

for patients either in the PGx-guided or TAU groups, could not be blinded and therefore phone interviews by independent raters were considered as the best option to guarantee double-blinded assessments. The present study has been conducted with conditions representative of real-world clinical practice. Most subjects enrolled were not drug-naïve (having received up to 15 previous courses of different psychiatric medication for the current depressive episode), and a substantial percentage of them displayed concurrent psychiatric disorders such as anxiety and substance abuse, while 17.8% displayed a depression of mild severity. In contrast, Phase III clinical trials of antidepressant efficacy commonly tend to employ more stringent inclusion/exclusion criteria, typically excluding subjects with comorbidities, those with HDRS-17 baseline severity of < 19 and those with a current episode lasting more than 24 months [39]. In this regard, efficacy of antidepressant medication compared with placebo increases with severity of the disorder and tends to be



smaller in patients with mild to moderate depression [39, 40]. In our study, comorbidities were not excluded and patients were selected according to a CGI-S score ≥ 4 , which may explain the finding of a 17.8% of subjects with HDRS-17 score below 14 at randomization (baseline), the depression severity cutoff used in the STAR-D study [41]. Furthermore, our study included patients who had failed multiple previous treatments (65% of the population could be regarded as refractory).

A recent systematic review indicated that, up until now, only a handful of studies have examined the effects of combinatorial pharmacogenomics testing on clinical outcomes of adult MDD patients [17]. Of these, only two were randomized clinical trials, and none were multi-centric studies. In the first one, Winner and colleagues found a statistical trend for better outcomes in a trial conducted in 51 study subjects (26 pharmacogenetic-guided versus 25 unguided) with baseline HDRS-17 scores ≥ 14 [18]. Conversely, Singh [19] used a pharmacogenetic report to adjust drug dosages in 148 MDD patients (74 guided versus 74 unguided) and showed patients in the guided group had a 2.52-fold increased likelihood of remission. Of note, the latter included subjects with HDRS-17 scores over 18 only, and excluded smokers, patients with psychiatric comorbidities, and those receiving known inducers/inhibitors of CYP2C19, CYP2D6 and ABCB1. Although with promising results, both studies were conducted in populations of patients of modest size and thus additional data was needed to firmly establish the utility of pharmacogenetic testing for the treatment of MDD.

Therefore, regardless of the high heterogeneity of the AB-GEN full study population in terms of depression severity, length of diagnosis and comorbidities, statistically significant differences were observed in the PGx-guided treatment group versus the unguided group, although effect sizes were modest. The definition of sustained response in this study required at least obtaining significant differences already at 8 weeks, which may be too short a follow-up period, especially in a design seeking to demonstrate superiority against treatment as usual (opposed to trials intending to prove non-inferiority). The statistically significant increase in response rate in the PGx-guided group during the study period and the difference observed against the control group at 12 weeks raise the question of whether a longer follow-up time could confirm a difference in sustained response.

The effects of PGx-guided treatment on response (PGI-I) and HDRS-17 change were more consistent and clinically relevant in subjects with 1 to 3 unsuccessful previous drug trials, where a 2.39-fold increase in the odds of response was found. Hence, our results suggest that use of pharmacogenetic information to guide treatment adjustments would be justified if the traditional first line of treatment fails. Our results are in agreement

with previous studies reporting that pharmacogenetic tools are effective in patients that failed a previous medication trial [18, 19, 42]. Moreover, the results of this study are consistent with previous data from a retrospective naturalistic study also conducted with Neuropharmagen [20]. However, our results also indicate that pharmacogenetics tools may be of little benefit to those patients with large numbers of unsuccessful medication attempts. We hypothesize this could be due to those patients having less untested therapeutic alternatives remaining, and thus the reduction in uncertainty caused by the test would be smaller. Future studies should attempt to assess this hypothesis.

Remarkably, the present study is also the first prospective multicenter double-blind RCT indicating that the use of a pharmacogenetic test report improves medication tolerability as suggested by a statistically significant reduction in the burden of side-effects. Non-adherence is a global challenge for psychiatry and has been linked to poorer outcomes, while improved tolerability facilitates long-term adherence. In the present study, a very small correlation was found between the change in HDRS-17 and the change in side effect burden on the same visits, suggesting that the improved tolerability is not the cause of the improvement in depression severity during the 12-week follow-up period.

The pharmacogenetic tool used in this study also allows physicians to check for potential drug-drug, drug-medical condition and drug-lifestyle factor interactions. Therefore, we compared those patients whose treating psychiatrists had consulted for interaction alerts to those whose treating psychiatrist had not, within the PGx group. A slight increase in response rate was observed in the former group, yet the opposite trend was observed regarding the reduction in HDRS-17, the differences being not significant in either case. Also, it must be noted that the number of subjects displaying real interactions was not determined, and could differ between the two subgroups, thus compromising their comparability. Therefore, no conclusions could be drawn regarding whether the addition of interaction alerts to pharmacogenetic information had a significant impact.

Personalization of psychiatric treatments using pharmacogenetic information is emerging as a valuable tool to identify in advance which medications will be more effective, which will require dose adjustments or which may cause meaningful adverse reactions. Besides a clinically-demonstrated effect on efficacy and tolerability, for pharmacogenetic data to represent a real benefit for psychiatric patients it needs to be seamlessly integrated into clinical practice. Drug response and tolerability profiles depend on the combined effects of different genes as well as environmental and clinical factors. In this regard, the translation of the combined effect of different

genes into actionable recommendations has been previously shown to outperform the effect of single genes [43]. The Neuropharmagen web-based platform uses a proprietary combinatorial approach to translate pharmacogenetic as well as pharmacological information into clinical actionable recommendations. In the case of drug-metabolizing enzymes polymorphisms, international guidelines (Clinical Pharmacogenetics Implementation Consortium genotype-driven dose adjustments, FDA-approved drug labelling) are included in the recommendations when available.

A number of barriers have been noted for the widespread adoption of precision medicine, such as insufficient evidence generation, data sharing and slow uptake of genomic information into clinical care [44]. In this regard, a multi-centric, double-blinded RCT design such as the one used in our study represents the gold standard for evidence generation, while having performed the study in a naturalistic scenario allows to account for the limitations in sharing and uptaking of pharmacogenetic data in a real-life scenario.

Conclusions

The AB-GEN study contributes to demonstrate that the use of a pharmacogenetic-based precision medicine platform may have a significant impact on clinical improvement of MDD patients and reduction of drug side effects compared to standard of care, even if results in sustained response rates before the end of the 12-week follow-up were similar in the studied groups. The effect was especially relevant in subjects with one to three previous failed antidepressant trials, but not in drug-naïve patients or those with more than 3 failed drug trials. This study does have several limitations. Firstly, personnel of AB-Biotics (developer of Neuropharmagen®) collaborated in the analysis of the results, the interpretation of the study and the preparation of the manuscript. Secondly, the clear majority of participating patients were of Caucasian origin. Thus, application of findings to other ethnic groups should be considered with care. Additionally, we acknowledge the limitations of using a simple scale, such as PGI-I, as the primary outcome assessment. Moreover, epigenetic factors are not included in current pharmacogenomic testing algorithms and thus were not considered in this study. Future approaches analyzing genetic as well as epigenetic factors may increase the predictive capability of such tools. Also, because most subjects were already on treatment at study entry and some were under polytherapy, we could not clearly establish whether medication changes occurring during the study affected drugs prescribed in the randomization visit, drugs prescribed before the randomization visit and kept at the same dose, or prescribed before the randomization visit but whose dosing had been changed according to the tests results. However, PGx testing may report several therapeutic alternatives or

complementary drug options for a given patient, and thus changes in medication after randomization visit in a naturalistic setting cannot be directly related to a success or failure of a PGx test to deliver useful information. This further highlights the importance of large, randomized, multi-centric studies to assess the overall practical effect of using vs not using PGx information. Finally, additional studies will be needed for independent replication as well as to confirm these findings in other psychiatry diagnoses such as bipolar disorder or schizophrenia.

In summary, the present study found that PGx-guided prescription has potential to help improve both efficacy and tolerability compared to treatment as usual in a naturalistic setting, but such clinical utility likely depends on the patient profile, and should be replicated in studies with different ethnicities.

Additional files

Additional file 1: Supplementary information. **Figure S1–4 and Tables S1–8.** (DOCX 695 kb)

Additional file 2: List of Ethic Committees that approved the AB-GEN trial. Full names of the all ethics committees that approved the trial at each participating hospital. (DOCX 13 kb)

Abbreviations

CGI-S: Clinical Global Impression-Severity; CNS: Central Nervous System; CPIC: Clinical Pharmacogenetics Implementation Consortium; DSM-IV-TR: Diagnostic and Statistical Manual of Mental Disorders, 4th Edition, Text Revision; FIBSER: Frequency, Intensity, and Burden of Side Effects Ratings; HDRS-17: 17-item Hamilton Depression Rating Scale; IRB: Institutional Review Board; MDD: Major depressive disorder; PGI-I: Patient Global Impression of Improvement Scale; PGx: Pharmacogenetics; RCT: Randomized clinical trials; SATMED-Q: Treatment Satisfaction with Medicines Questionnaire; SDI: Sheehan Disability Inventory; TAU: Treatment as usual

Acknowledgements

The authors thank Fernando Rico-Villamoros, MD (Cociente, S. L., Madrid, Spain) for help in preparing the study protocol; Adknomia Health Research SL (Barcelona, Spain), the Medical Statistics Core Facility IDIBAPS-Hospital Clinic (Barcelona, Spain) and Trialance Sccl (Barcelona, Spain) for providing contract research organization services. We express our thanks to the medical doctors, investigators and nurses of the different hospitals, and to the patients for their participation.

AB-GEN Collaborative Group:

Enric Álvarez

Centro de Investigación Biomédica en Red de Salud Mental (CIBERSAM), Spain, & Mental Health Department, Hospital de Mataró, Consorci Sanitari del Maresme, Mataró, Spain.

Fermín Mayoral-Cleries

Department of Psychiatry, Hospital Universitari de Bellvitge, Institut d'Investigació Biomèdica de Bellvitge (IDIBELL), Carretera de la Feixa Llarga s/n, 08907 Hospitalet de Llobregat, Barcelona, Spain.

Javier Quintero

Departament de Ciències clíniques, Facultat de Medicina, Universitat de Barcelona, Barcelona, Spain.

Diego J. Palao

UGC de Salud Mental, Hospital Regional Universitario de Málaga, Instituto de Investigación Biomédica de Málaga (IBIMA), Málaga, Spain

Luis Javier Irastorza

Department of Psychiatry, Hospital Infanta Leonor, Madrid, Spain

Rafael Navarro

Servei de Salut Mental, Parc Taulí-Hospital Universitari, Departament de Psiquiatria, Universitat Autònoma de Barcelona, Sabadell, Barcelona, Spain.

María Luisa Barrigón

Departamento de Psiquiatría, Fundación Jiménez Díaz, IIS FJD, Madrid, Spain.
Marina Garriga

Centro de Investigación Biomédica en Red de Salud Mental (CIBERSAM),
Spain & Columbia University, New York, USA

Lucía Villoria

Departamento de Psiquiatría, Fundación Jiménez Díaz, IIS FJD, Madrid, Spain.
Virginia Soria

Centro de Investigación Biomédica en Red de Salud Mental (CIBERSAM),
Spain & Servei de Psiquiatria, Hospital de la Santa Creu i Sant Pau, Institut
d'Investigació Biomèdica Sant Pau (IIB Sant Pau), Universitat Autònoma de
Barcelona, Barcelona, Spain.

José M. Rodao

Centro de Investigación Biomédica en Red de Salud Mental (CIBERSAM),
Spain & Departament of Psychiatry, Hospital Universitario Ramón y Cajal,
Instituto Ramón y Cajal de Investigación Sanitaria (IRYCIS), Universidad de
Alcalá, Madrid, Spain.

Juan Castaño

Centro de Investigación Biomédica en Red de Salud Mental (CIBERSAM),
Spain & Institut de Neuropsiquiatria i Addiccions (INAD), Hospital del Mar,
Institut Hospital del Mar d'Investigacions Mèdiques (IMIM), Departament de
Psiquiatria, Universitat Autònoma de Barcelona, Barcelona, Spain.

Jordi Blanch

Centro de Investigación Biomédica en Red de Salud Mental (CIBERSAM),
Spain & Columbia University, New York, USA.

Cristóbal Díez-Aja

Centro de Investigación Biomédica en Red de Salud Mental (CIBERSAM),
Spain & Institut de Neuropsiquiatria i Addiccions (INAD), Hospital del Mar,
Institut Hospital del Mar d'Investigacions Mèdiques (IMIM), Departament de
Psiquiatria, Universitat Autònoma de Barcelona, Barcelona, Spain.

Mercè Brat

Centro de Investigación Biomédica en Red de Salud Mental (CIBERSAM),
Spain & Columbia University, New York, USA.

José M. Mongil

Department of Psychiatry, Instituto de Investigación Hospital 12 de Octubre
(i+12), Madrid, Spain.

Juan Miguel Garrido

Centro de Investigación Biomédica en Red de Salud Mental (CIBERSAM),
Spain & Columbia University, New York, USA.

Fernando Mora

Departament de Ciències Clíniques, Facultat de Medicina, Universitat de
Barcelona, Barcelona, Spain.

Pedro M. Holgado

Department of Psychiatry, Hospital Álvaro Cunqueiro, Complejo Hospitalario
Universitario de Vigo, Instituto Biomédico Galicia Sur, Vigo, Spain.

Roberto Sánchez-González

Centro de Investigación Biomédica en Red de Salud Mental (CIBERSAM),
Spain & Institut de Neuropsiquiatria i Addiccions (INAD), Hospital del Mar,
Institut Hospital del Mar d'Investigacions Mèdiques (IMIM), Departament de
Psiquiatria, Universitat Autònoma de Barcelona, Barcelona, Spain.

Alexandra Bagney

Centro de Investigación Biomédica en Red de Salud Mental (CIBERSAM),
Spain & Department of Psychiatry, Hospital Álvaro Cunqueiro, Complejo
Hospitalario Universitario de Vigo, Instituto Biomédico Galicia Sur, Vigo,
Spain.

Eva Aguilar

UGC de Salud Mental, Hospital Regional Universitario de Málaga, Instituto de
Investigación Biomédica de Málaga (IBIMA), Málaga, Spain.

María Paz García-Portilla

Centro de Investigación Biomédica en Red de Salud Mental (CIBERSAM),
Spain & Área de Psiquiatría, Facultad de Medicina, Universidad de Oviedo,
Instituto Universitario de Neurociencias del Principado de Asturias
(INEUROPA), Oviedo, Spain.

Gemma Safont

Psychiatric Hospitalization Unit, Hospital General de Jerez de la Frontera,
Jerez de la Frontera, Cádiz, Spain.

Joana Bauzá

Centro de Investigación Biomédica en Red de Salud Mental (CIBERSAM),
Spain & Mental Health Department, Hospital de Mataró, Consorci Sanitari del
Maresme, Mataró, Spain.

Mercedes Martín-del Moral

Department of Psychiatry, Hospital Álvaro Cunqueiro, Complejo Hospitalario
Universitario de Vigo, Instituto Biomédico Galicia Sur, Vigo, Spain.

Nazaret Cantero

Department of Psychiatry, Hospital Universitari de Bellvitge, Institut
d'Investigació Biomèdica de Bellvitge (IDIBELL), Carretera de la Feixa Llarga s/
n, 08907 Hospitalet de Llobregat, Barcelona, Spain.

Miquel Bernardo

Centro de Investigación Biomédica en Red de Salud Mental (CIBERSAM),
Spain & Columbia University, New York, USA.

Núria Rissech

AB-Biotics, S. A, Barcelona, Spain.

Marta Puigmulé

AB-Biotics, S. A, Barcelona, Spain.

Miquel Àngel Bonachera

AB-Biotics, S. A, Barcelona, Spain.

Funding

This work was supported by the Spanish Centre for Industrial Technological
Development (*Centro para el Desarrollo Tecnológico Industrial*, CDTI; IDI-20130958)
and the Spanish Ministry of Economy and Competitiveness PTQ-11-05076; PTQ-
11-04914; INC-FPGS-2011-2223; INC-FPGS-2011-2224. The funding agency had no
role in the development of the study design, collection of data, manuscript
development, or the decision to submit this manuscript for publication. The study
also received funding support from private investors (Mr. Luis Sánchez-Lafuente
and Mr. Sergi Audivert) as well as from Almirall SA (Barcelona, Spain). AB-Biotics as
sponsor participated in the design, analysis and interpretation of the study.

Availability of data and materials

The AB-GEN participating cohorts' data are available only to the collaborating
scientists from the respective AB-GEN participating centers (AB-GEN
Collaborative Group). However, the data that support the findings of this
study are available upon reasonable request from the corresponding
author (JM Menchón).

Authors' contributions

VP, JMM1, AS, JE, MT and MAB conceived and designed the clinical trial.
VP, JSR, CSN, JB1, EBG, EV, JMO, RRR, JMV, JG, JCC, MS, PAS, AI, JDA,
JMM1, EA1, FMC, JQ, DJP, LJI, RN, MLB, MG, LV, VS, JMR, JC, JB2, CDA,
MB, JMM2, JMG, FM, PMH, RSG, AB, EA2, MPPG, GS, JB3, MMM, NC and
MB enrolled and screened patients. MP performed the genetic analyses
and test results reports. NR, AS, JE and MT contributed materials/analysis
tools. JE performed statistical analyses. VP, JMM1, EV, AS, JE and MT
wrote the manuscript with the contribution of JDA, MG, JSR, CSN, JB1,
EBG, JMO, RRR, JMV, JG, JCC, MS, PAS, AI and MAB. All authors read and
approved the final manuscript.

Ethics approval and consent to participate

This prospective, multicenter, randomized, double-blind, naturalistic
clinical study was approved by the Institutional Review Board (IRB) of
Hospital Clínic de Barcelona (Spain), acting as a centralized reference IRB,
as well as the IRB of each participating hospital (see 'List of Ethic
Committees' in the Additional file 2). The study was conducted in
compliance with Good Clinical Practice requirements and the Declaration
of Helsinki. Written informed consent was obtained from all participants
before enrolment.

Consent for publication

Not applicable.

Competing interests

VP has received grants and served as consultant, advisor or CME speaker for
AB-Biotics, AstraZeneca, Bristol-Myers Squibb, Glaxo-Smith-Kline, Pfizer, Janssen,
Lundbeck, Medtronic, Otsuka, and the Spanish Ministry of Economy and
Competitiveness (Centro de Investigación Biomédica en Red de Salud Mental,
CIBERSAM). AS and JE are employees of and minor stock shareholders in
AB-Biotics. MT is employee of AB-Biotics. JSR has received grants and served as
consultant, advisor or CME speaker for Lundbeck, Janssen and Otsuka. JB1 has
received grants and served as consultant, advisor or CME speaker for AB-Biotics,
Adamed, Almirall, AstraZeneca, Bristol-Myers Squibb, Ferrer, Glaxo-Smith-Kline,
Hoffman-La Roche, Janssen-Cilag, Eli Lilly, Lundbeck, Merck, Novartis, Organon,
Otsuka, Pfizer, Pierre-Fabre, Sanofi-Aventis, Servier, Schering-Plough and Shire, and
research funding from the Spanish Ministry of Economy and Competitiveness
(CIBERSAM, Instituto de Salud Carlos III, ISCIII), Spanish Ministry of Health, Social

Services and Equality (Plan Nacional sobre Drogas) and the European Union's 7th Framework Program (EU FP7). EB has received grants from Janssen, Otsuka and Servier. EV has received grants and served as consultant, advisor or CME speaker for AB-Biotics, Actavis, Allergan, AstraZeneca, Bial, Bristol-Myers Squibb, Dainippon Sumitomo Pharma, Elan, Eli Lilly, Farmindustria, Ferrer, Forest Research Institute, Gedeon Richter, Glaxo-Smith-Kline, Janssen, Lundbeck, Otsuka, Pfizer, Roche, Sanofi-Aventis, Servier, Shire, Solvay, Sunovion, Takeda, Telefonica, the Brain & Behavior Research Foundation (NARSAD), CIBERSAM, the EU FP7 (ENBREC), and the Stanley Medical Research Institute. JMO has received grants and served as consultant, advisor or CME speaker for AstraZeneca, Bristol-Myers Squibb, Glaxo-Smith-Kline, Pfizer, Janssen, Lundbeck, Otsuka, Eli Lilly, Novartis, and Sanofi-Aventis. RRJ has received grants and served as consultant, advisor or CME speaker for ISCIII, Fondo de Investigación Sanitaria (FIS), CIBERSAM, Madrid Regional Government (S2010/BMD-2422 AGES), Janssen-Cilag, Lundbeck, Otsuka, Pfizer, Ferrer, Juste. JMV has received grants and served as consultant, advisor or CME speaker for Janssen-Cilag, Pfizer, Bristol-Myers Squibb, Otsuka, Glaxo-Smith-Kline, AstraZeneca, Sanofi-Aventis, Novartis, Lundbeck and Ferrer. JG has received grants and served as consultant, advisor or CME speaker for Janssen-Cilag, Lundbeck, Pfizer and BioClever 2005. JCC has received grants and served as consultant for Lundbeck/Otsuka. PAS has received grants or served as consultant for Adamed, AstraZeneca, Brainpharma, Bristol-Myers Squibb, Esteve, Ferrer inCode, Glaxo-Smith-Kline, Janssen-Cilag, Eli Lilly, Lundbeck, Otsuka, Pfizer, Rovi, Servier, the Spanish Ministry of Health, Social Services and Equality (Plan Nacional sobre Drogas), CIBERSAM, and the EU FP7. AI has served as speaker or advisor for Bristol-Myers Squibb, Ferrer, Lundbeck, Otsuka and Servier. JDA is funded by the Instituto de Salud Carlos III through a 'Juan Rodés' research fellowship (JR14/00011) and has received lecture honoraria from Pfizer, Glaxo-Smith-Kline and Lundbeck. JMM1 has received grants and served as consultant, advisor or CME speaker for AB-Biotics, Ferrer, Glaxo-Smith-Kline, Janssen, Lundbeck, Medtronic, Otsuka, and CIBERSAM. EA1 has received grants and served as consultant, advisor or CME speaker for AB-Biotics, Eli Lilly, Lundbeck, Pfizer, Sanofi-Aventis, Bristol-Myers Squibb, Servier and Otsuka. FMC has served as consultant for Janssen-Cilag. JQ has received grants, served as consultant or CME speaker for Janssen, Otsuka, Shire, Mutua Madrileña & Grunethal. DJP has received grants and served as consultant for Lundbeck/Otsuka. MG has received grants and served as consultant, advisor or CME speaker for Ferrer, Janssen, Lundbeck and the Spanish Ministry of Economy and Competitiveness (ISCIII). VS has received grants and served as consultant or CME speaker for Servier, Rovi, Lundbeck, Pfizer and the Spanish Ministry of Science and Innovation. CDA has received grants and served as consultant, advisor or CME speaker for Lundbeck, Rovi, Eli Lilly and Pfizer. JMM2 has received grants and served as CME speaker for Janssen-Cilag, Pfizer, Otsuka, AstraZeneca, Sanofi-Aventis, Lundbeck and Ferrer. FM has received grants and served as consultant, advisor or CME speaker for AstraZeneca, Ferrer, Janssen, Glaxo-Smith-Kline, Pfizer, Otsuka and Lundbeck. PMH has received grants and served as consultant, advisor or CME speaker for Janssen-Cilag, Lundbeck, Otsuka, Boehringer Ingelheim. EA2 has received grants and served as CME speaker for Janssen-Cilag and Otsuka. MGP has received grants or served as consultant for Lundbeck/Otsuka, ISCIII, CIBERSAM, Janssen-Cilag, Eli Lilly, Lundbeck, Otsuka, Pfizer, Servier, Roche and Rovi. MB has received grants and served as consultant, advisor or CME speaker for AB-Biotics, Adamed, Almirall, Amgen, Boehringer, Eli Lilly, Ferrer, Forum Pharmaceuticals, Gedeon Richter, Hersill, Janssen-Cilag, Lundbeck, Otsuka, Pfizer, Roche, Servier and has obtained research funding from the Ministry of Education, Culture and Sports, ISCIII, CIBERSAM, the Government of Catalonia, Secretaria d'Universitats i Recerca del Departament d'Economia i Coneixement (2014SGR441), European Group for Research In Schizophrenia (EGRIS) Foundation, and the EU FP7. MP and NR are employees of AB-Biotics. MAB is employee of and stock shareholder in AB-Biotics. All other authors declare no conflicts of interests.

Publisher's Note

Springer Nature remains neutral with regard to jurisdictional claims in published maps and institutional affiliations.

Author details

¹Centro de Investigación Biomédica en Red de Salud Mental (CIBERSAM), Av. Monforte de Lemos, 3-5, Madrid, Spain. ²Institut de Neuropsiquiatria i Addiccions (INAD), Hospital del Mar, Institut Hospital del Mar d'Investigacions Mèdiques (IMIM), Departament de Psiquiatria, Universitat Autònoma de Barcelona, Barcelona, Spain. ³AB-Biotics, S. A, Barcelona, Spain. ⁴Departament de Psiquiatria, Hospital Universitari Ramón y Cajal, Instituto Ramón y Cajal de Investigación Sanitaria (IRYCIS), Universidad de Alcalá, Madrid, Spain. ⁵University Psychiatric Hospital, Institut Pere Mata, IISPV, Universitat Rovira

Virgili, Reus, Spain. ⁶Àrea de Psiquiatria, Facultat de Medicina, Universidad de Oviedo, Instituto Universitario de Neurociencias del Principado de Asturias (INEUROPA), Oviedo, Spain. ⁷Departamento de Psiquiatria, Fundación Jiménez Díaz, IIS FJD, Madrid, Spain. ⁸Hospital Universitario Rey Juan Carlos, Hospital Universitario Infanta Elena, Hospital General de Villalba, Universidad Autónoma de Madrid, Madrid, Spain. ⁹Columbia University, New York, USA. ¹⁰Department of Psychiatry and Psychology, Institute of Neuroscience, Hospital Clinic Barcelona, Institut d'Investigacions Biomèdiques August Pi i Sunyer (IDIBAPS), University of Barcelona, Barcelona, Spain. ¹¹Department of Psychiatry, Hospital Álvaro Cunqueiro, Complejo Hospitalario Universitario de Vigo, Instituto Biomédico Galicia Sur, Vigo, Spain. ¹²Department of Psychiatry, Instituto de Investigación Hospital 12 de Octubre (i+12), Madrid, Spain. ¹³Psychiatric Hospitalization Unit, Hospital General de Jerez de la Frontera, Jerez de la Frontera, Cádiz, Spain. ¹⁴Psychiatric Unit, Hospital Universitari Mútua Terrassa, Terrassa, Spain. ¹⁵Mental Health Department, Hospital de Mataró, Consorci Sanitari del Maresme, Mataró, Spain. ¹⁶Servei de Psiquiatria, Hospital de la Santa Creu i Sant Pau, Institut d'Investigació Biomèdica Sant Pau (IIB Sant Pau), Universitat Autònoma de Barcelona, Barcelona, Spain. ¹⁷Department of Psychiatry, Hospital Universitari de Bellvitge, Institut d'Investigació Biomèdica de Bellvitge (IDIBELL), Carretera de la Feixa Llarga s/n, 08907 Hospitalet de Llobregat, Barcelona, Spain. ¹⁸Departament de Ciències Clíniques, Facultat de Medicina, Universitat de Barcelona, Barcelona, Spain.

Received: 30 January 2017 Accepted: 29 June 2017

Published online: 14 July 2017

References

- Vos T, Flaxman AD, Naghavi M, Lozano R, Michaud C, Ezzati M, Shibuya K, Salomon JA, Abdalla S, Aboyans V, et al. Years lived with disability (YLDs) for 1160 sequelae of 289 diseases and injuries 1990-2010: a systematic analysis for the Global Burden Of Disease Study 2010. *Lancet*. 2012;380(9859):2163-96.
- Crisafulli C, Fabbri C, Porcelli S, Drago A, Spina E, De Ronchi D, Serretti A. Pharmacogenetics of antidepressants. *Front Pharmacol*. 2011;2:6.
- Kelly K, Posternak M, Alpert JE. Toward achieving optimal response: understanding and managing antidepressant side effects. *Dialogues Clin Neurosci*. 2008;10(4):409-18.
- Tansey KE, Guipponi M, Hu X, Domenici E, Lewis G, Malafosse A, Wendland JR, Lewis CM, McGuffin P, Uher R. Contribution of common genetic variants to antidepressant response. *Biol Psychiatry*. 2013;73(7):679-82.
- Perlis RH. Pharmacogenomic testing and personalized treatment of depression. *Clin Chem*. 2014;60(1):53-9.
- Bousman CA, Hopwood M. Commercial pharmacogenetic-based decision-support tools in psychiatry. *Lancet Psychiatry*. 2016;3(6):585-90.
- Altar CA, Hornberger J, Shewade A, Cruz V, Garrison J, Mrazek D. Clinical validity of cytochrome P450 metabolism and serotonin gene variants in psychiatric pharmacotherapy. *Int Rev Psychiatry*. 2013;25(5):509-33.
- Fabbri C, Serretti A. Pharmacogenetics of major depressive disorder: top genes and pathways toward clinical applications. *Curr Psychiatry Rep*. 2015; 17(7):50.
- Breitenstein B, Scheuer S, Pfister H, Uhr M, Lucae S, Holsboer F, Ising M, Bruckl TM. The clinical application of ABCB1 genotyping in antidepressant treatment: a pilot study. *CNS Spectr*. 2014;19(2):165-75.
- Outbred T, Das P, Dobson-Stone C, Felmingham KL, Brynjar RA, Nathan PJ, Malhi GS, Kemp AH. Impact of 5-HTTLPR on SSRI serotonin transporter blockade during emotion regulation: a preliminary fMRI study. *J Affect Disord*. 2016;196:11-9.
- Hicks JK, Sangkuhl K, Swen JJ, Ellingrod VL, Muller DJ, Shimoda K, Bishop JR, Kharasch ED, Skaar TC, Gaedigk A, et al. Clinical pharmacogenetics implementation consortium guideline (CPIC) for CYP2D6 and CYP2C19 genotypes and dosing of tricyclic antidepressants: 2016 update. *Clin Pharmacol Ther*. 2016. [Epub ahead of print].
- Hicks JK, Bishop JR, Sangkuhl K, Muller DJ, Ji Y, Leckband SG, Leeder JS, Graham RL, Chiulli DL, Llerena A, et al. Clinical Pharmacogenetics implementation consortium (CPIC) guideline for CYP2D6 and CYP2C19 genotypes and dosing of selective serotonin reuptake inhibitors. *Clin Pharmacol Ther*. 2015;98(2):127-34.
- Drozda K, Muller DJ, Bishop JR. Pharmacogenomic testing for using genetic information, and test options. *Pharmacotherapy*. 2014;34(2):166-84.

14. Ehmann F, Caneva L, Prasad K, Paulmichl M, Maliepaard M, Llerena A, Ingelman-Sundberg M, Papatuca-Amati M. Pharmacogenomic information in drug labels: European Medicines agency perspective. *pharmacogenomics J*. 2015;15(3):201–10.
15. Vieta E. Personalised medicine applied to mental health: precision psychiatry. *Rev Psiquiatr Salud Ment*. 2015;8(3):117–8.
16. Jurgens G, Jacobsen CB, Rasmussen HB, Werge T, Nordentoft M, Andersen SE. Utility and adoption of CYP2D6 and CYP2C19 genotyping and its translation into psychiatric clinical practice. *Acta Psychiatr Scand*. 2012;125(3):228–37.
17. Rosenblat JD, Lee Y, McIntyre RS. Does Pharmacogenomic testing improve clinical outcomes for major depressive disorder? A systematic review of clinical trials and cost-effectiveness studies. *J Clin Psychiatry*. 2017;78(6):720–29.
18. Winner JG, Carhart JM, Altar CA, Allen JD, Dechairo BM. A prospective, randomized, double-blind study assessing the clinical impact of integrated pharmacogenomic testing for major depressive disorder. *Discov Med*. 2013; 16(89):219–27.
19. Singh AB. Improved antidepressant remission in major depression via a pharmacokinetic pathway polygene Pharmacogenetic report. *Clin Psychopharmacol Neurosci*. 2015;13(2):150–6.
20. Espadaler J, Tuson M, Lopez-Ibor JM, Lopez-Ibor F, Lopez-Ibor MI: Pharmacogenetic testing for the guidance of psychiatric treatment: a multicenter retrospective analysis. *CNS Spectr*. 2016;1-10. [Epub ahead of print].
21. Moher D, Hopewell S, Schulz KF, Montori V, Gotzsche PC, Devereaux PJ, Elbourne D, Egger M, Altman DG. CONSORT 2010 explanation and elaboration: updated guidelines for reporting parallel group randomised trials. *BMJ*. 2010;340:c869.
22. Guy W. Clinical global impression scale. The ECDEU Assessment Manual for Psychopharmacology-Revised Volume DHEW Publ No ADM 76. 1976;338:218–22.
23. Hamilton M. A rating scale for depression. *J Neurol Neurosurg Psychiatry*. 1960;23(1):56.
24. Wisniewski SR, Rush AJ, Balasubramani GK, Trivedi MH, Nierenberg AA. Self-rated global measure of the frequency, intensity, and burden of side effects. *J Psychiatr Pract*. 2006;12(2):71–9.
25. Sheehan D, Harnett-Sheehan K, Raj B. The measurement of disability. *Int Clin Psychopharmacol*. 1996;11:89–95.
26. Bobes J, Badia X, Luque A, Garcia M, Gonzalez M, Dal-Re R. Validation of the Spanish version of the Liebowitz social anxiety scale, social anxiety and distress scale and Sheehan disability inventory for the evaluation of social phobia. *Med Clin*. 1999;112(14):530–8.
27. Ruiz MA, Pardo A, Rejas J, Soto J, Villasante F, Aranguren JL. Development and validation of the “Treatment Satisfaction with Medicines Questionnaire” (SATMED-Q). *Value Health*. 2008;11(5):913–26.
28. Swen JJ, Nijenhuis M, de Boer A, Grandia L, Maitland-van der Zee AH, Mulder H, Rongen GA, van Schaik RH, Schalekamp T, Touw DJ, et al. Pharmacogenetics: from bench to byte—an update of guidelines. *Clin Pharmacol Ther*. 2011;89(5):662–73.
29. Porcelli S, Fabbri C, Serretti A. Meta-analysis of serotonin transporter gene promoter polymorphism (5-HTTLPR) association with antidepressant efficacy. *Eur Neuropsychopharmacol*. 2012;22(4):239–58.
30. Niitsu T, Fabbri C, Bentini F, Serretti A. Pharmacogenetics in major depression: a comprehensive meta-analysis. *Prog Neuro-Psychopharmacol Biol Psychiatry*. 2013;45C:183–94.
31. Breitenstein B, Scheuer S, Bruckl TM, Meyer J, Ising M, Uhr M, Holsboer F. Association of ABCB1 gene variants, plasma antidepressant concentration, and treatment response: results from a randomized clinical study. *J Psychiatr Res*. 2016;73:86–95.
32. Uhr M, Tontsch A, Namendorf C, Ripke S, Lucae S, Ising M, Dose T, Ebinger M, Rosenhagen M, Kohli M, et al. Polymorphisms in the drug transporter gene ABCB1 predict antidepressant treatment response in depression. *Neuron*. 2008;57(2):203–9.
33. Kawaguchi DM, Glatt SJ. GRIK4 polymorphism and its association with antidepressant response in depressed patients: a meta-analysis. *Pharmacogenomics*. 2014;15(11):1451–9.
34. van der Weide K, van der Weide J. The influence of the CYP3A4*22 polymorphism on serum concentration of quetiapine in psychiatric patients. *J Clin Psychopharmacol*. 2014;34(2):256–60.
35. Mas S, Gasso P, Ritter MA, Malagelada C, Bernardo M, Lafuente A. Pharmacogenetic predictor of extrapyramidal symptoms induced by antipsychotics: Multilocus interaction in the mTOR pathway. *Eur Neuropsychopharmacol*. 2015;25(1):51–9.
36. Sankoh AJ, Huque MF, Dubey SD. Some comments on frequently used multiple endpoint adjustment methods in clinical trials. *Stat Med*. 1997;16(22):2529–42.
37. Hedges LV. Distribution theory for Glass’s estimator of effect size and related estimators. *J Educ Behav Stat*. 1981;6(2):107–28.
38. Charland SL, Agatep BC, Herrera V, Schrader B, Frueh FW, Ryzkin M, Shabbeer J, Devlin JJ, Superko HR, Stanek EJ. Providing patients with pharmacogenetic test results affects adherence to statin therapy: results of the additional KIF6 risk offers better adherence to Statins (AKROBATS) trial. *Pharmacogenomics J*. 2014;14(3):272–80.
39. Wisniewski SR, Rush AJ, Nierenberg AA, Gaynes BN, Warden D, Luther JF, McGrath PJ, Lavori PW, Thase ME, Fava M, et al. Can phase III trial results of antidepressant medications be generalized to clinical practice? A STAR*D report. *Am J Psychiatry*. 2009;166(5):599–607.
40. Fournier JC, DeRubeis RJ, Hollon SD, Dimidjian S, Amsterdam JD, Shelton RC, Fawcett J. Antidepressant drug effects and depression severity: a patient-level meta-analysis. *JAMA*. 2010;303(1):47–53.
41. Rush AJ, Fava M, Wisniewski SR, Lavori PW, Trivedi MH, Sackeim HA, Thase ME, Nierenberg AA, Quitkin FM, Kashner TM, et al. Sequenced treatment alternatives to relieve depression (STAR*D): rationale and design. *Control Clin Trials*. 2004;25(1):119–42.
42. Hall-Flavin DK, Winner JG, Allen JD, Carhart JM, Proctor B, Snyder KA, Drews MS, Eisterhold LL, Geske J, Mrazek DA. Utility of integrated pharmacogenomic testing to support the treatment of major depressive disorder in a psychiatric outpatient setting. *Pharmacogenet Genomics*. 2013; 23(10):535–48.
43. Altar CA, Carhart JM, Allen JD, Hall-Flavin DK, Dechairo BM, Winner JG. Clinical validity: combinatorial pharmacogenomics predicts antidepressant responses and healthcare utilizations better than single gene phenotypes. *Pharmacogenomics J*. 2015;15(5):443–51.
44. Dzau VJ, Ginsburg GS. Realizing the full potential of precision medicine in health and health care. *JAMA*. 2016;316(16):1659–60.

Submit your next manuscript to BioMed Central and we will help you at every step:

- We accept pre-submission inquiries
- Our selector tool helps you to find the most relevant journal
- We provide round the clock customer support
- Convenient online submission
- Thorough peer review
- Inclusion in PubMed and all major indexing services
- Maximum visibility for your research

Submit your manuscript at
www.biomedcentral.com/submit

